

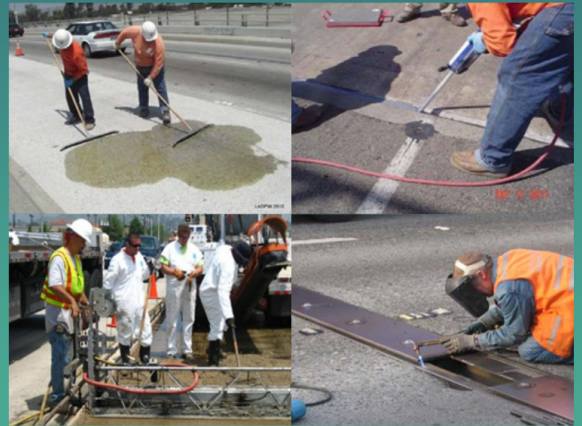
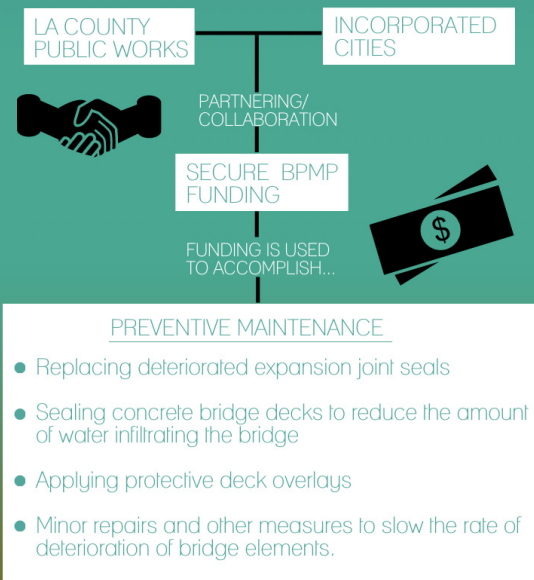
BRIDGE PREVENTIVE MAINTENANCE PROGRAM

The California Department of Transportation has established a Bridge Preventive Maintenance Program to help local agencies extend the life of their bridges by funding certain activities that have been pre-approved by the Federal Highway Administration (FHWA).

WHAT IS PREVENTIVE MAINTENANCE?

The Bridge Preventive Maintenance Program (BPMP) aims to maintain the existing inventory of bridges in a structurally safe and serviceable condition by correcting minor structural defects and deficiencies early in a bridge's life, rather than waiting until a bridge develops major problems.

WHAT IS THE PROCESS?



WHAT ARE THE BENEFITS?

- Delays the need for more substantial rehabilitation, reconstruction, or replacement
- Sustainable practice when properly applied
- Cost-effective way of extending service life
- Efficient use of limited funding

WORK IN PROGRESS

Plans currently being prepared for **258** bridges in 34 cities, including....

- Sealing **2.0 MILLION** square feet of bridge deck
- Replacing **32,000** feet of joint seals
- Patching **10,000** square feet of spalled concrete

PREVENTIVE MAINTENANCE FOR

400+

COUNTY AND CITY OWNED BRIDGES

