

Auburn Boulevard

Complete Streets Revitalization Project - Phase I

City of Citrus Heights, California



Added ADA Features



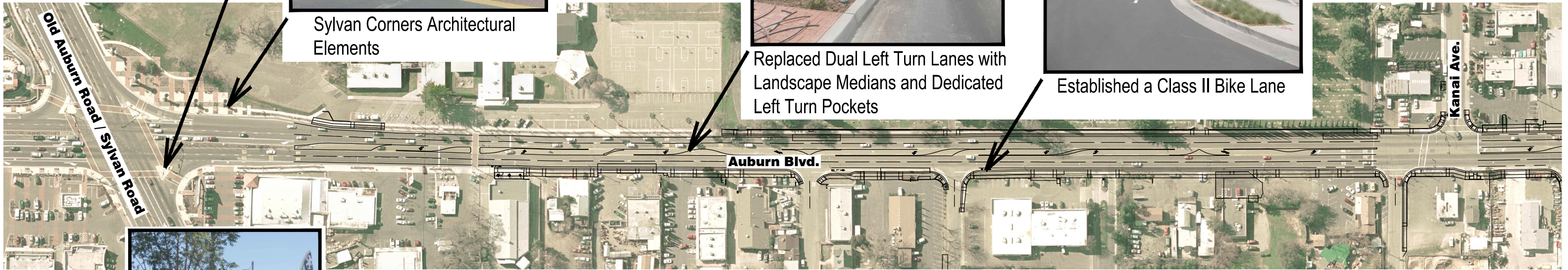
Sylvan Corners Architectural Elements



Replaced Dual Left Turn Lanes with Landscape Medians and Dedicated Left Turn Pockets



Established a Class II Bike Lane



Installed Energy Efficient Decorative Street Lighting



Created a Pedestrian/Vehicular Buffer



Planted a Total of 230 New Trees



Added a Pedestrian Bridge



New Rusch Park Entrance

