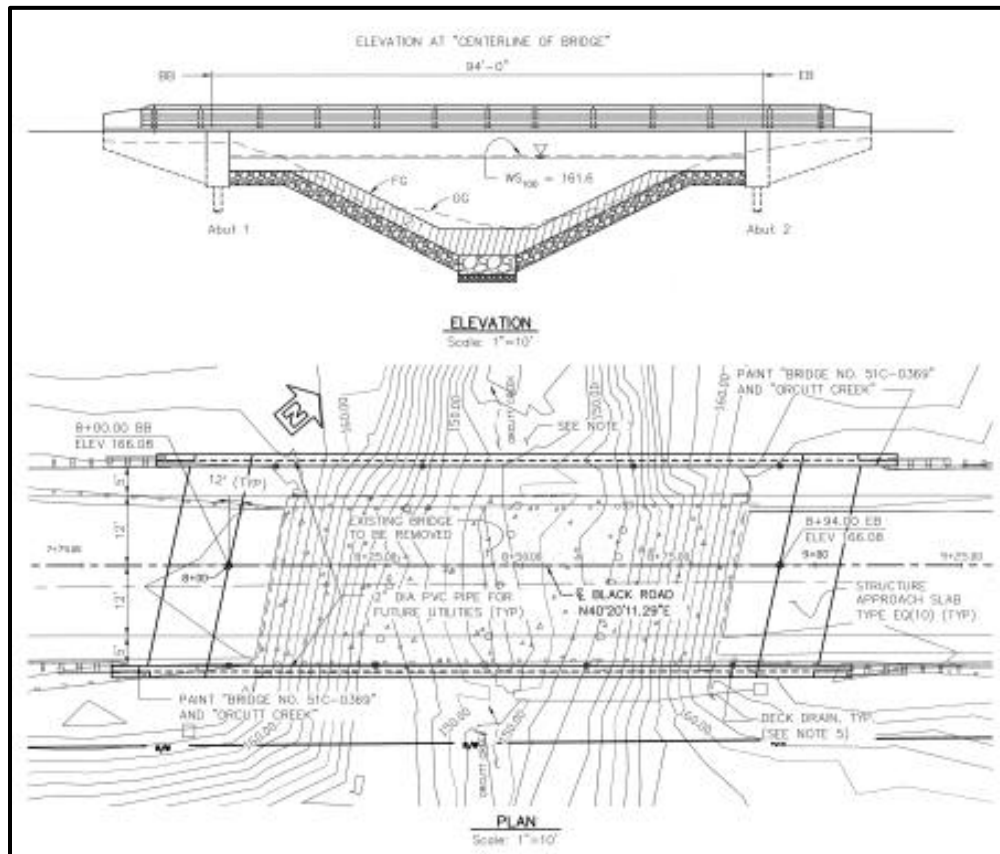


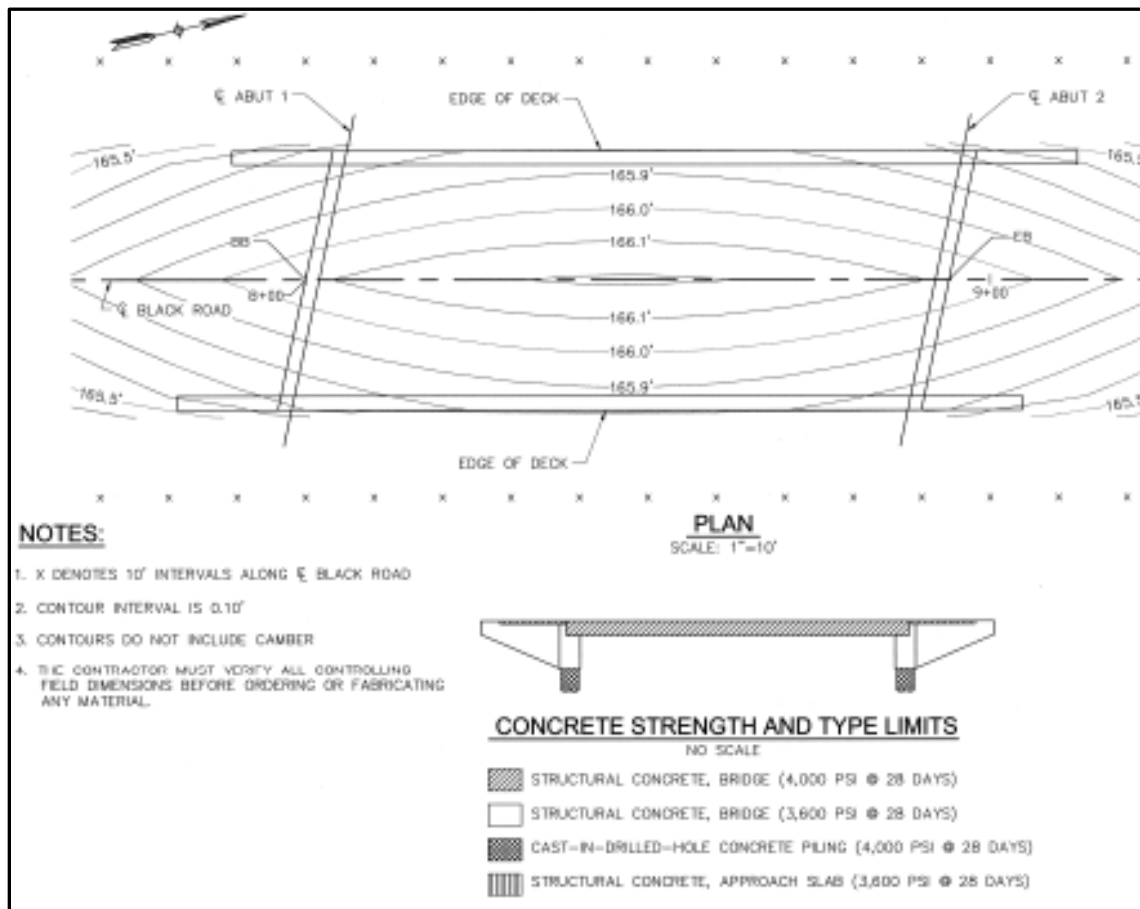
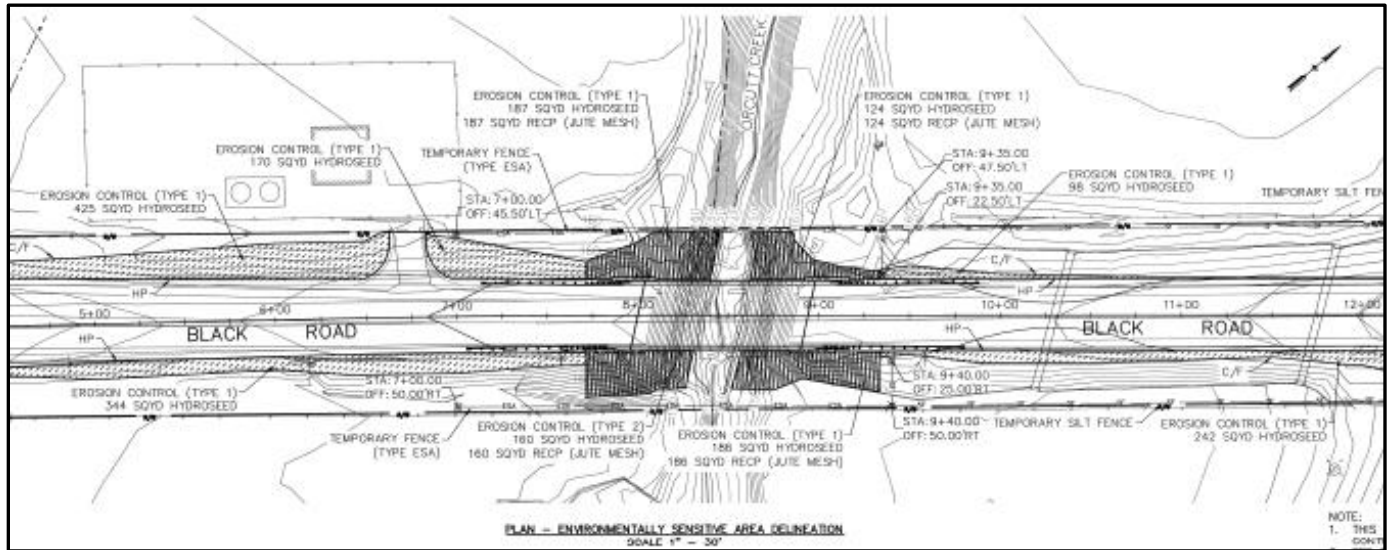
Supplemental Information

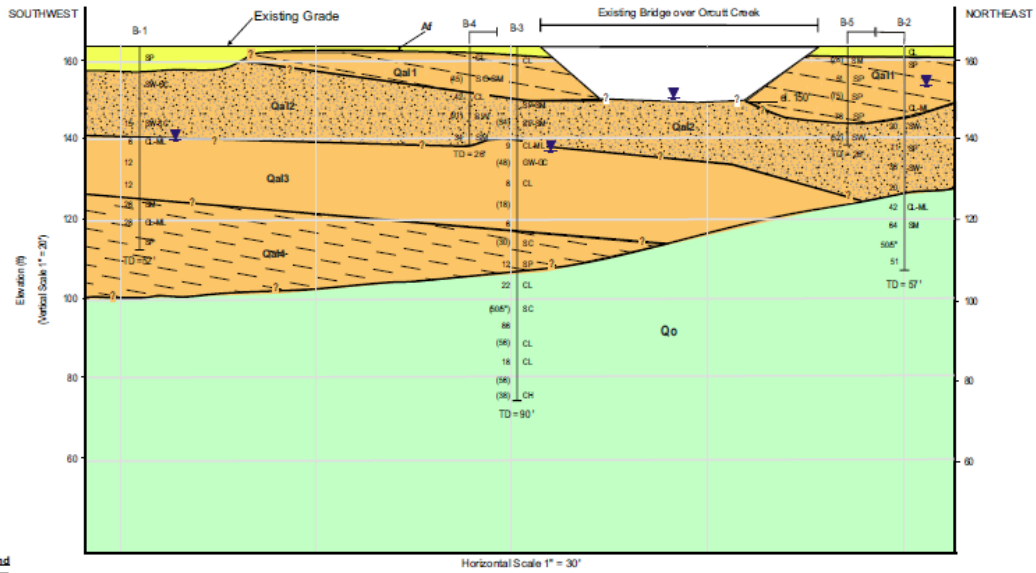
Black Road Bridge Project
County of Santa Barbara, Department of Public Works
Submission for Award
January 29, 2015



VICINITY MAP
NO SCALE







Legend

- Af** Artificial Fill
- Qa1-4** Alluvium: Medium dense silty SAND (SM), lean CLAY (CL), Silty CLAY (CL-ML) and Silty Clayey SAND (SC-SM)
- Qa1-2** Alluvium: Medium dense to very dense SAND (SP/SW) with interbedded Silty to Clayey SAND (SM, SC)
- Qa3** Alluvium: Firm CLAY (CL, CL-ML)
- Qa4** Alluvium: Medium dense Silty, Clayey and Poorly-graded SAND (SC, SM, SP) with interbedded Silty CLAY (CL-ML)
- Qo** Orcutt Formation: Silty and clayey SAND (SM, SC), lean CLAY (CL), Silty CLAY (CL-ML), SILT (ML)

- USCS Classification**
- GW = Well Graded GRAVEL
 - SP = Poorly Graded SAND
 - SW = Well Graded SAND
 - SM = Silty SAND
 - SC = Clayey SAND or Sandy CLAY
 - ML = SILT
 - CH = Fat CLAY
 - CL = Lean CLAY

Dual symbols represent mixed or borderline soil classification
See logs and text for further description of geologic units

- (16) Blows per foot from 3" Modified California Sampler
- 6 Blows per foot from 2" SPT Sampler
- TD Total depth of boring
- B-1 Boring Number
- Groundwater level encountered

SUBSURFACE PROFILE
Black Road Bridge Replacement
Orcutt, California

