

**CITY OF SAN JOSE**

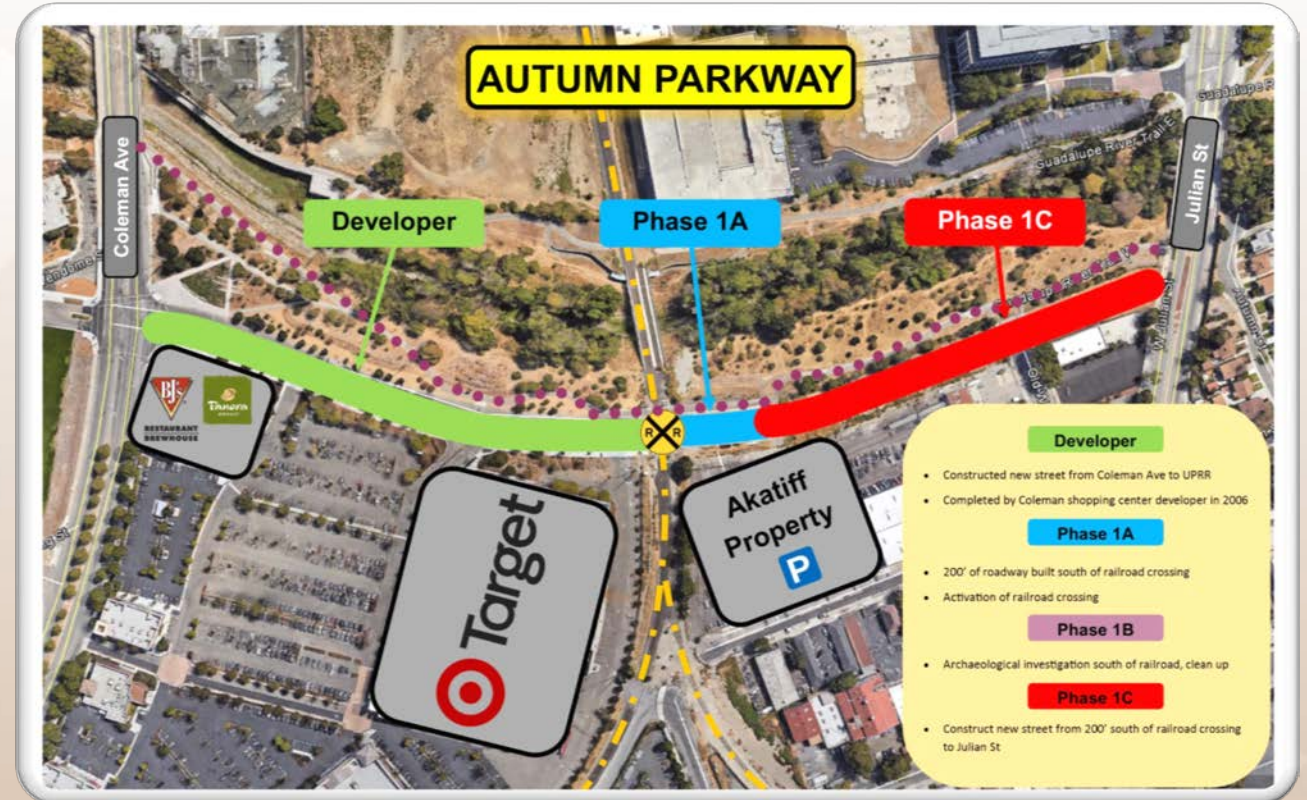
**The Autumn Pkwy Extension**

# Project Objective

- Provide north and south connectivity into the Diridon Station Area
- Provide a safe multimodal transportation option for all users of the local street and road system
- Increase roadway capacity into Downtown San Jose

# Scope of Work

- New roadway
- New traffic signal at Julian St
- Raised medians with street trees
- New sidewalk
- Class II bike lanes with green pavement enhancement
- Streetlight and pedestrian scale lighting
- Bioretentions





# Plan View of Autumn Pkwy



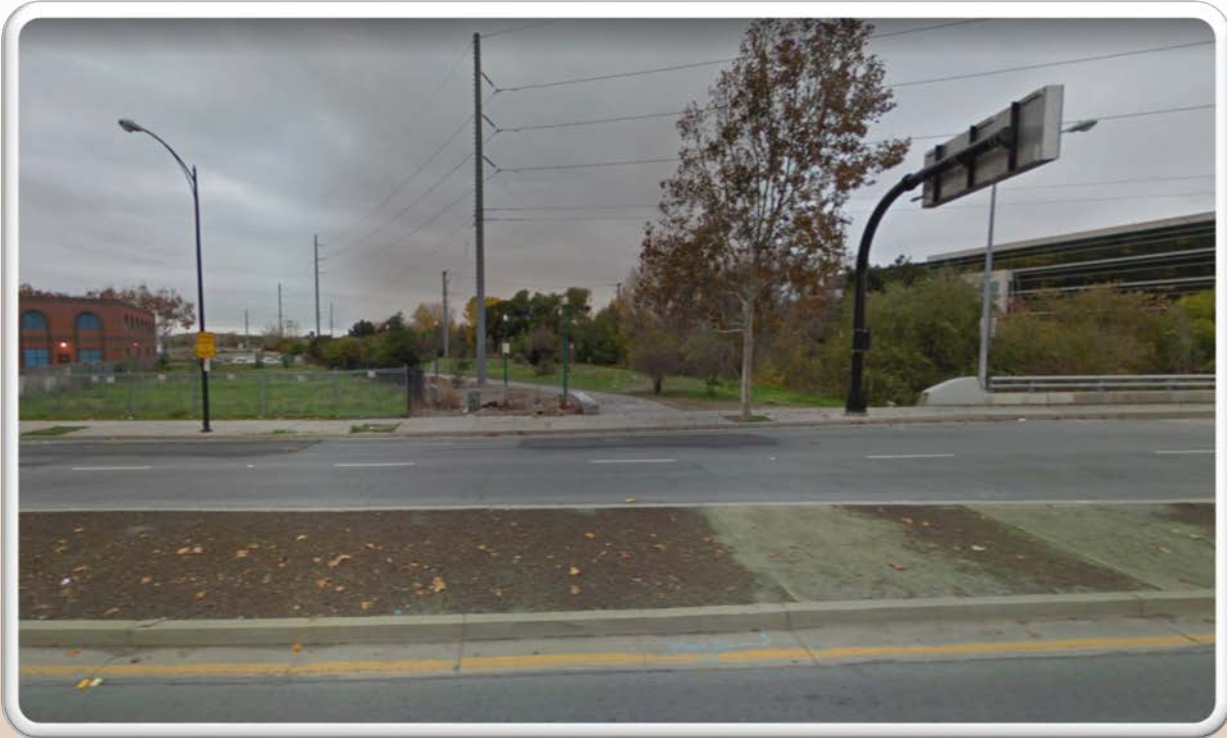
Before Construction



After Construction



# Autumn Pkwy



**Before Construction**

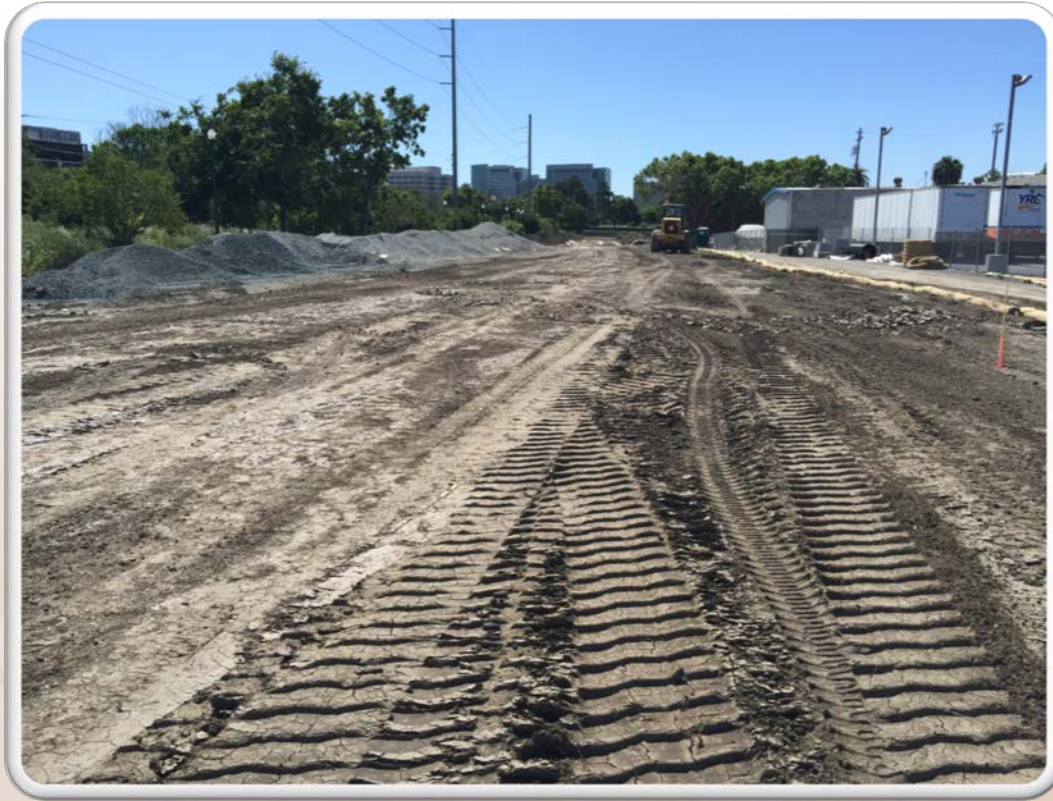
Future intersection of Julian Street and Autumn Parkway looking north



**During Construction**

Future intersection of Julian Street and Autumn Parkway looking north

# Construction of New Roadway



Future Autumn Parkway looking south



Future Autumn Parkway looking north

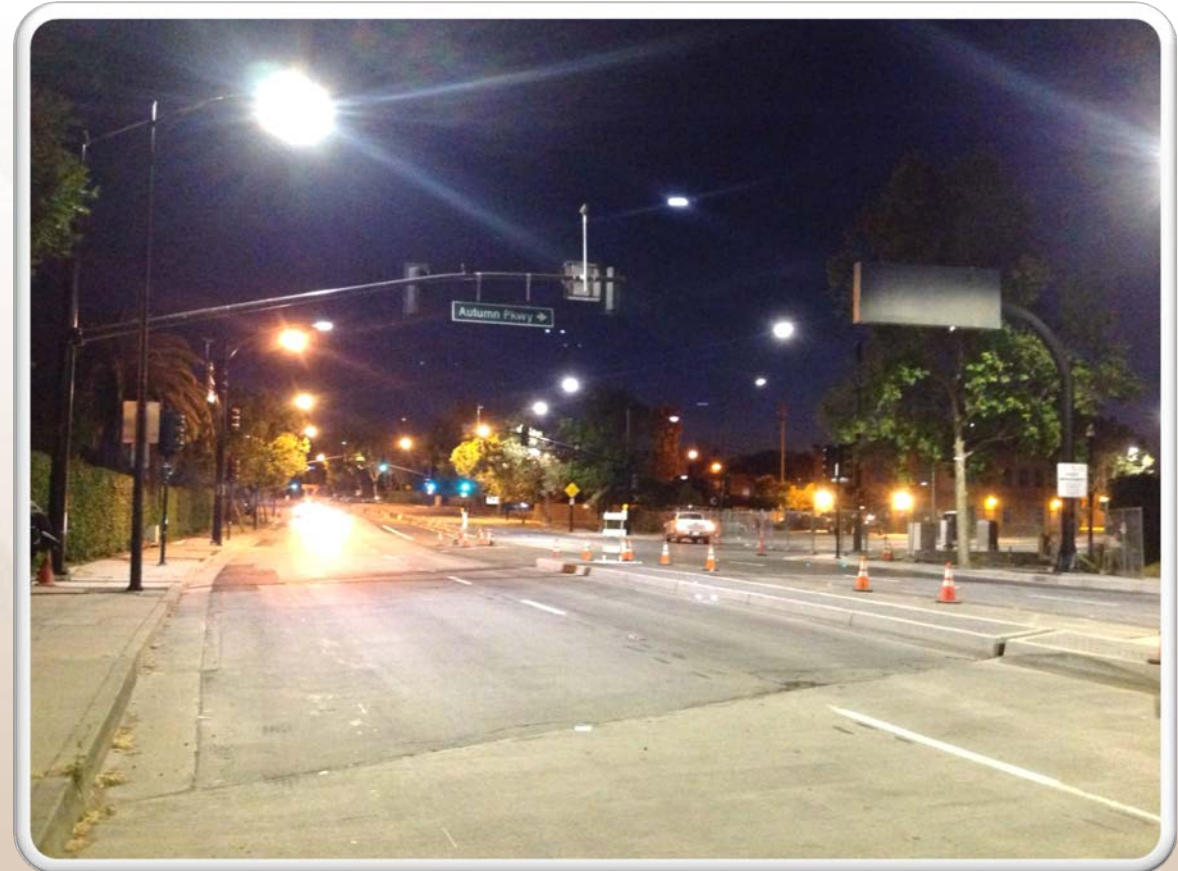


# Traffic Signal at W. Julian St



**Before Construction**

Future traffic signal at Julian and Autumn Parkway looking west



**After Construction**

Installed traffic signal at Julian and Autumn Parkway looking west



# Construction of Bioretentions





# After Construction



New Autumn Parkway looking north



New Autumn Parkway looking south