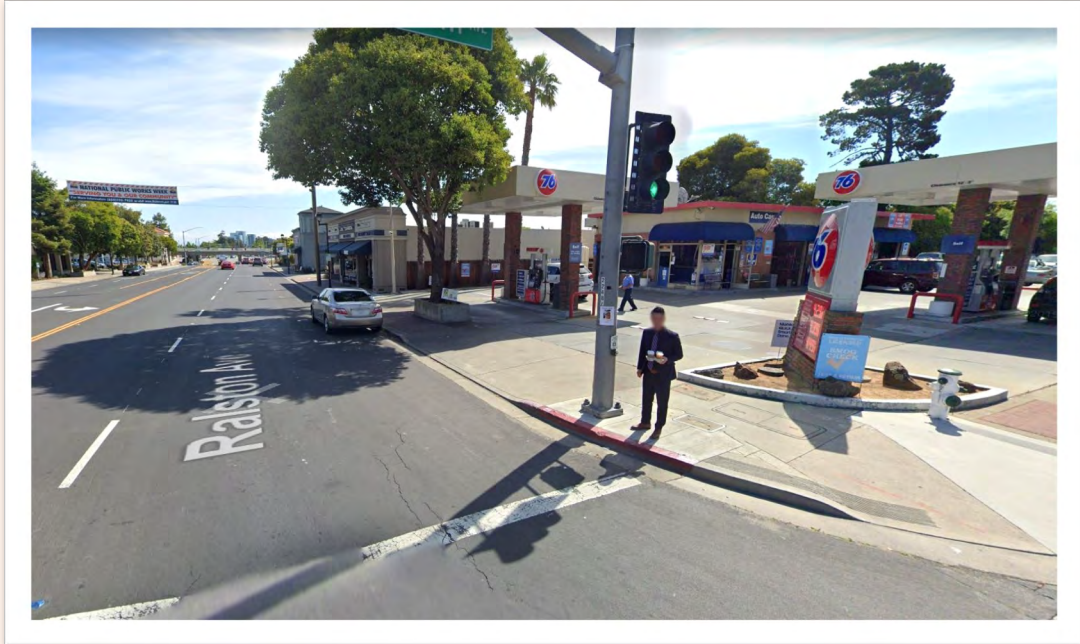




Ralston Avenue Corridor Improvement Project

Segments 1 and 2

City of Belmont



Before: Ralston Avenue and 6th Avenue



After: Ralston Avenue and 6th Avenue. Parking was removed from this section and the sidewalk was widened. You can also see the high visibility crosswalk.



Before: Sidewalk along Ralston Avenue between 6th and El Camino Real



After : Sidewalk along Ralston Avenue between 6th and El Camino Real. The sidewalk was widened which allowed for addition street furniture and street trees.



Before: Ralston Avenue



After: Ralston Avenue. Another look at the added sidewalk space and street furniture.



Typical new ADA ramps with high visibility crosswalks



New bike path through Twin Pines Park



New bike path through Twin Pines Park



New Pedestrian Hybrid Beacon at El Camino Real and Emmett Ave



High Visibility Crosswalk on El Camino Real and Emmett Ave



Shared path along El Camino Real



Shared path at the Caltrain Station



New Pedestrian Hybrid Beacon at Ralston Avenue and Elmer Street



New bike lane along Ralston Avenue