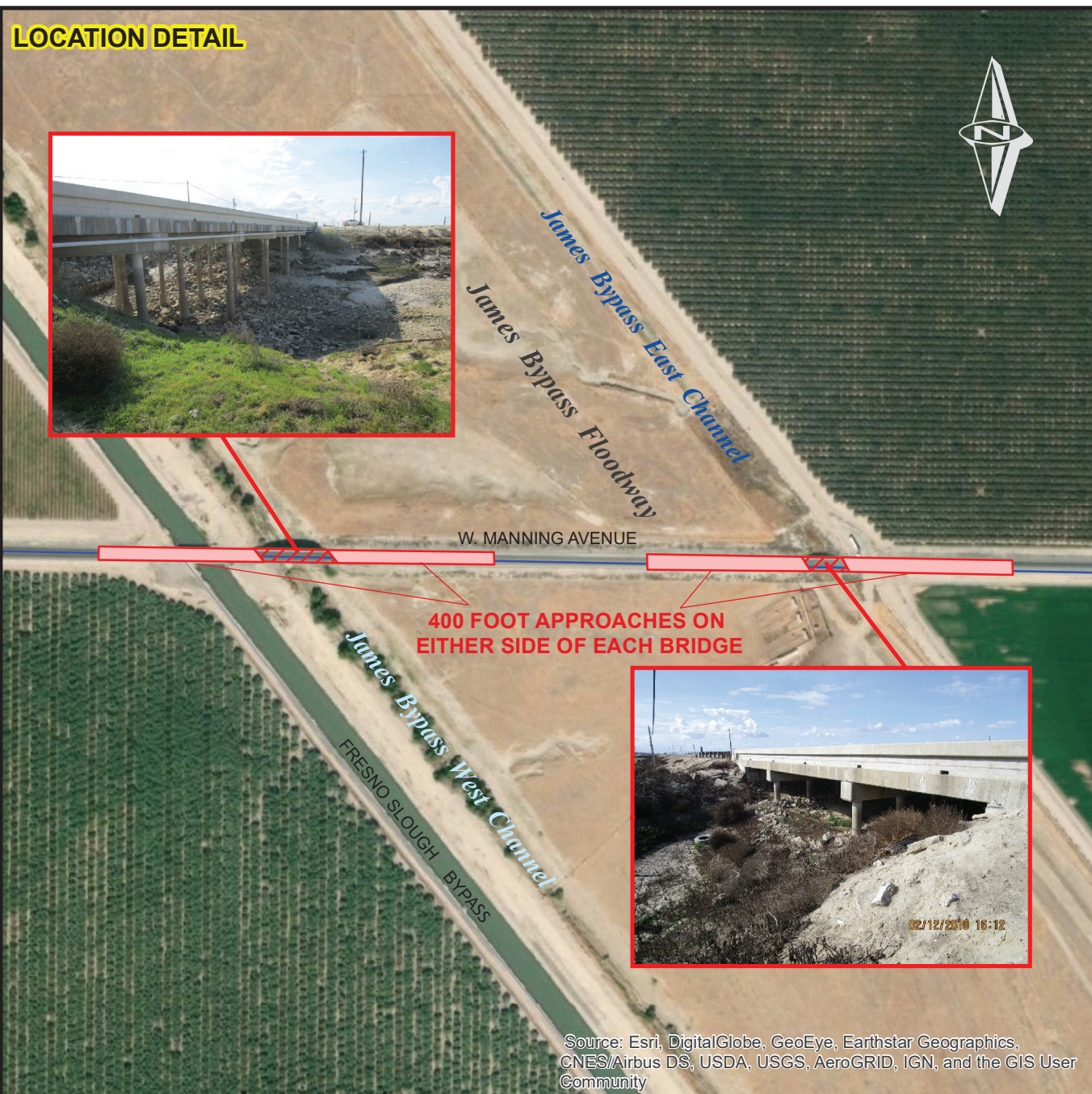
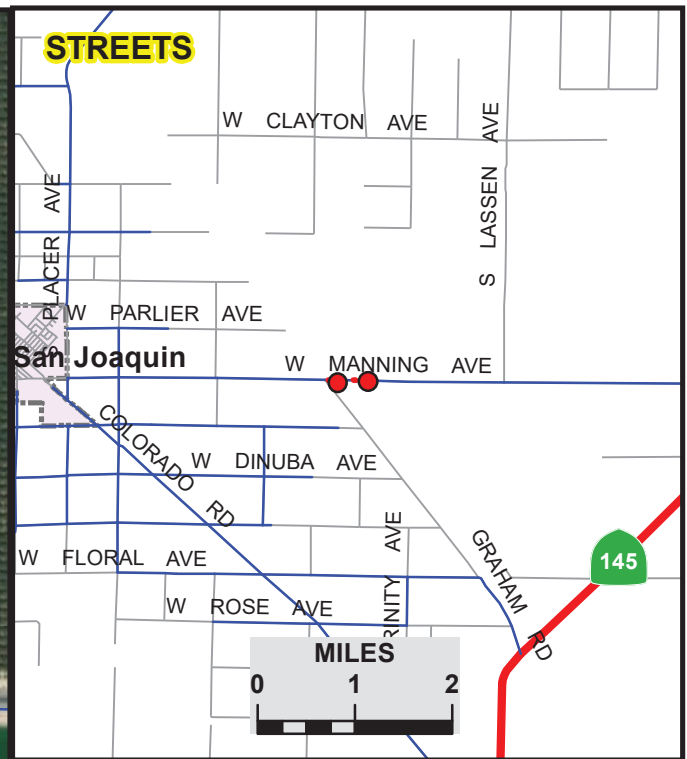


**LOCATION DETAIL**

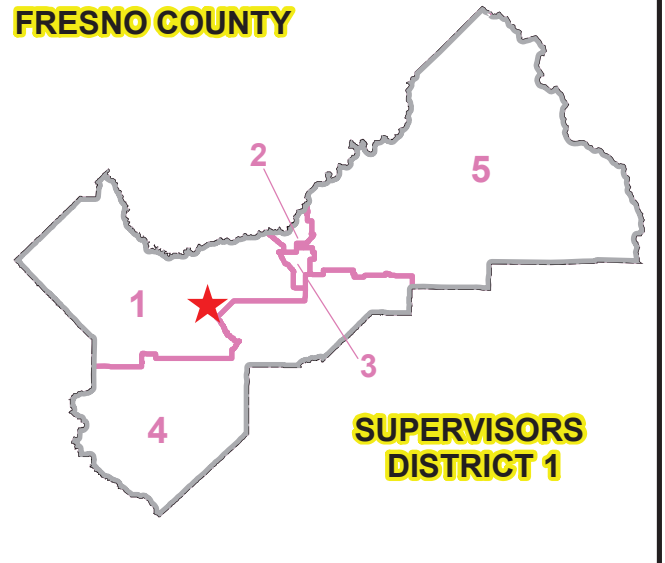


**400 FOOT APPROACHES ON EITHER SIDE OF EACH BRIDGE**

**STREETS**



**FRESNO COUNTY**



**SUPERVISORS DISTRICT 1**

Source: Esri, DigitalGlobe, GeoEye, Earthstar Geographics, CNES/Airbus DS, USDA, USGS, AeroGRID, IGN, and the GIS User Community

	<b>DATE:</b>	<b>SCALE IN FEET</b>
DESIGNED: D.N.	12/12/2019	
DRAWN: D.N.	12/12/2019	
STATE BRIDGE NOS. 42C0066 & 42C0067		



*DEPARTMENT OF PUBLIC WORKS & PLANNING*

**HIGHWAY BRIDGE PROGRAM  
JAMES BYPASS BRIDGE REPLACEMENTS (2)  
ON MANNING AVENUE  
BRLO-5942(233)**