

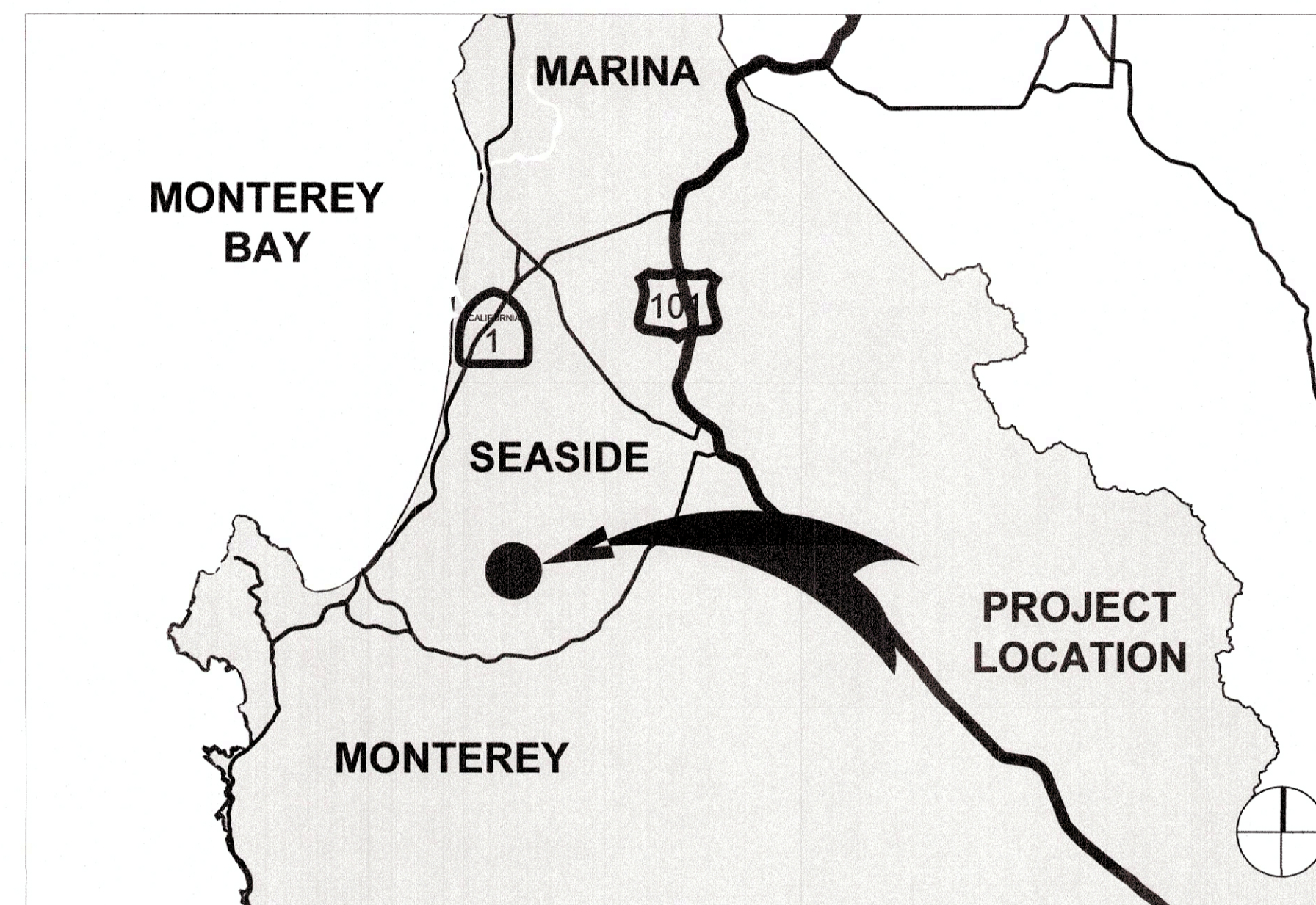
CITY OF SEASIDE ORD TERRACE ELEMENTARY SCHOOL CROSSING

PROJECT #21289609580

LEGEND

SYMBOL	DESCRIPTION
— · — · — · —	RIGHT OF WAY LINE
— — — — —	FENCE LINE
● _{WV}	WATER VALVE
◆ _{FH}	FIRE HYDRANT
WM□	EXISTING PULL BOX
—○—	EXISTING SIGN AND POLE
—■—	NEW SIGN AND POLE
—■—	RECTANGULAR RAPID FLASHING BEACON
□	NEW PULLBOX

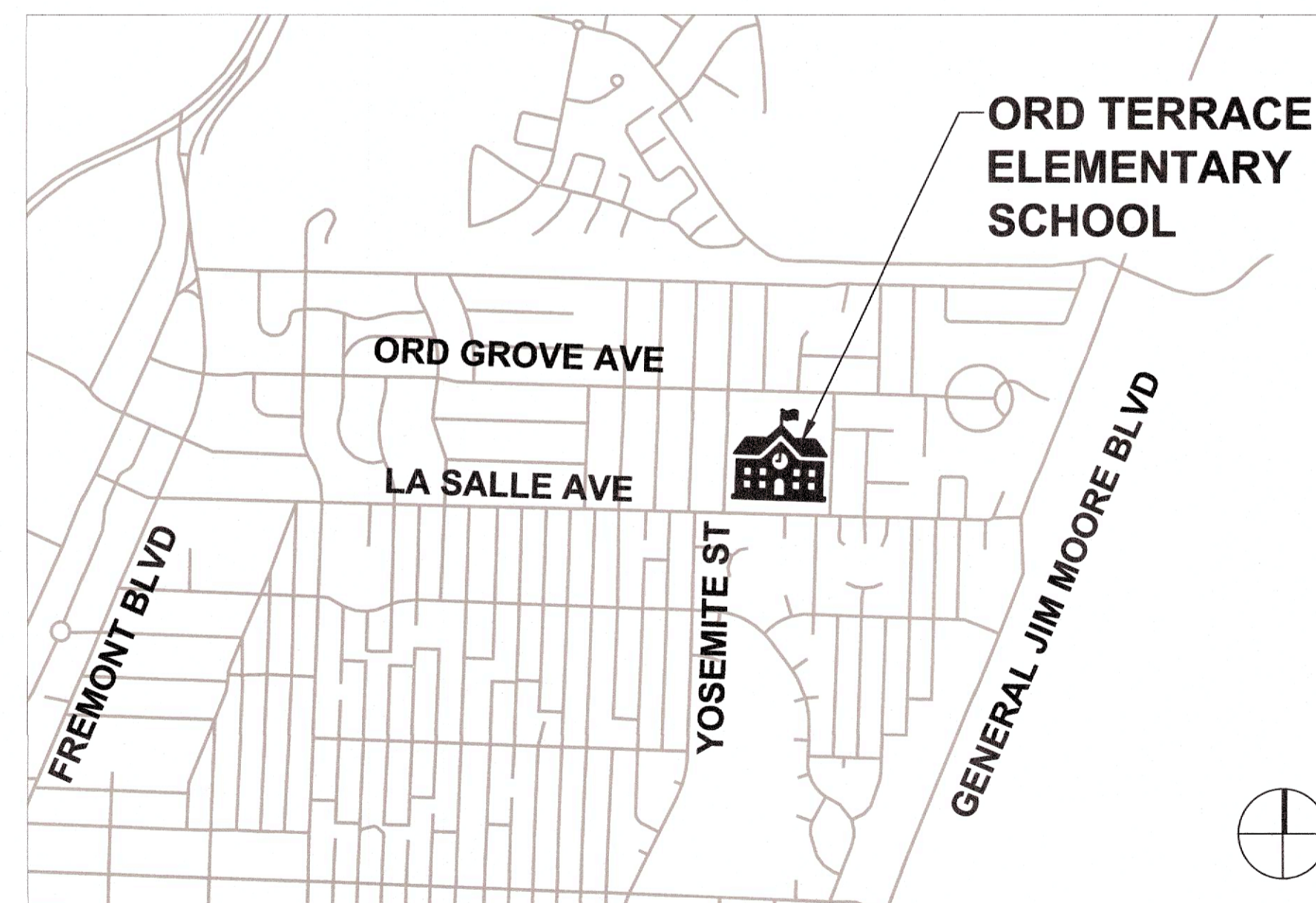
VICINITY MAP
NOT TO SCALE



INDEX OF SHEETS

SHEET	DRAWING	DESCRIPTION
1	T-1	TITLE SHEET
2	T-2	GENERAL NOTES
3	T-3	SURVEY CONTROL
4	D-1	DEMOLITION PLAN
5	L-1	LAYOUT PLAN
6	L-2	CURB RAMP DETAILS
7	S-1	STRIPING AND SIGNAGE PLAN WITH RRFB DETAILS
8	CD-1	CONSTRUCTION DETAILS
9	CD-2	CONSTRUCTION DETAILS

LOCATION MAP
NOT TO SCALE



CITY OF SEASIDE

NISHA A. PATEL, P.E.
PUBLIC WORKS DIRECTOR/CITY ENGINEER

05/05/2023

PREPARED UNDER THE DIRECTION OF:

ANDRES GONZALEZ, P.E.
PARISI TRANSPORTATION CONSULTING

05/05/2023

BASIS OF TOPOGRAPHY

BENCHMARK

VERTICAL DATUM NAVD88.

HORIZONTAL DATUM NAD83/CALIFORNIA ZONE III

BASIS OF BEARINGS

HORIZONTAL BASIS OF TOPOGRAPHY BASED ON CCS83, ZONE 3, EPOCH 2010.00

SURVEY PERFORMED BY LAWRENCE A STEVENS, AUGUST 2020.

CONFORM SET
MAY 18, 2023

100% BID
DOCUMENTS



Know what's below.
Call before you dig.

Parisi
TRANSPORTATION CONSULTING

800 Bancroft Way, Ste 203
Berkeley, CA 94710
(510) 343-6400



DRAWN: VM	CHECKED: AL
DESIGNED: AG	APPROVED: AG

CITY OF SEASIDE
ORD TERRACE ELEMENTARY SCHOOL CROSSING
TITLE SHEET

REVISIONS

NO.	DESCRIPTION

DATE	05/05/2023	SCALE	NTS
PMX PROJECT NO.	22055		
DRAWING	T-1		
SHEET NO.	1	OF	9

GENERAL NOTES

- ALL WORK SHALL CONFORM TO THE CURRENTLY ADOPTED EDITIONS OF THE STANDARD PLANS AND SPECIFICATIONS, PROCEDURES MANUALS, AND ALL APPLICABLE REGULATIONS AND JURISDICTIONAL AGENCIES, UNLESS OTHERWISE NOTED. TYPICAL DETAILS REFERRED TO ON THESE DRAWINGS ARE FROM THE STANDARD PLANS, MONTEREY COUNTY, STANDARD PLANS CALIFORNIA DEPARTMENT OF TRANSPORTATION (CALTRANS), AND THE CALIFORNIA MANUAL ON UNIFORM TRAFFIC CONTROL DEVICES (CAMUTCD), ISSUED BY CALTRANS.
- HORIZONTAL AND VERTICAL DIMENSIONS PROVIDED ON THE DRAWINGS ARE BASED ON DESIGN SURVEY METHODS. FIELD MEASUREMENTS MAY VARY FROM THOSE ON THE DRAWINGS. ADJUSTMENTS TO LINE AND GRADE MAY BE MADE BY THE ENGINEER DURING CONSTRUCTION. PAYMENT WILL BE BASED ON QUANTITIES INSTALLED.
- IT SHALL BE CONTRACTOR'S RESPONSIBILITY TO FIELD VERIFY LOCATIONS, ELEVATIONS, ETC. OF EXISTING FACILITIES AND TO IMMEDIATELY NOTIFY THE ENGINEER OF ANY FIELD CONFLICTS OR OMISSIONS.
- THE CONTRACTOR SHALL PROVIDE ADEQUATE TRAFFIC CONTROLS THROUGHOUT THE CONSTRUCTION PER THE PROJECT SPECIFICATIONS AND SHALL SUBMIT A PEDESTRIAN AND VEHICULAR TRAFFIC CONTROL PLAN SUBJECT TO THE APPROVAL OF THE CITY 15 WORKING DAYS PRIOR TO THE START DATE OF CONSTRUCTION. ALL TRAFFIC CONTROL AND DEVICES SHALL BE IN ACCORDANCE WITH THE LATEST EDITION OF THE CAMUTCD. CONTRACTOR SHALL POST INFORMATION SIGNS WARNING OF POTENTIAL TRAFFIC DELAYS AT LEAST 48 HOURS PRIOR TO ANY LANE CLOSURE. THE CITY RESERVES THE RIGHT TO REQUIRE MODIFICATIONS TO THE APPROVED TRAFFIC CONTROL PLAN IN THE FIELD.
- BIDDERS SHOULD NOTE THE PRESENCE OF HIGH-PRESSURE GAS TRANSMISSION PIPELINES, HIGH-VOLTAGE OVERHEAD AND BURIED UTILITIES AND SANITARY SEWER FORCE MAINS WITHIN THE WORK AREA.
- UTILITIES ARE SHOWN IN THEIR APPROXIMATE LOCATIONS FOR INFORMATIONAL PURPOSES. AS PART OF THEIR PRE-BID INSPECTION, BIDDERS SHALL NOTE THE TYPE AND LOCATION OF BURIED AND OVERHEAD UTILITIES IN THE PROPOSED WORK AREA. BIDDERS PRICE SHALL INCLUDE PROVISIONS FOR WORKING IN AREAS WHERE UTILITIES EXIST AT THE TIME OF BIDDING, WHETHER SHOWN ON THE PLANS OR NOT, AND NO ADDITIONAL COMPENSATION IS ALLOWED.
- THE CONTRACTOR SHALL NOTIFY UNDERGROUND SERVICE ALERT (U.S.A) AT 811 A MINIMUM OF TWO WORKING DAYS IN ADVANCE OF ANY EXCAVATION.
- THE CONTRACTOR SHALL NOTIFY THE APPROPRIATE AGENCIES PRIOR TO THE START OF ANY WORK WHICH MAY AFFECT THEIR FACILITIES. THE FOLLOWING UTILITIES AND AGENCIES ARE KNOWN TO HAVE FACILITIES WITHIN THE PROJECT LIMITS:
 - CITY OF SEASIDE PUBLIC WORKS (831) 899-6835
 - PACIFIC GAS & ELECTRIC (800) 743-5000
 - SEASIDE MUNICIPAL WATER SYSTEM (831) 899-6842
- CONTRACTOR AGREES TO ASSUME SOLE AND COMPLETE RESPONSIBILITY FOR JOB SITE CONDITIONS DURING THE COURSE OF CONSTRUCTION, INCLUDING SAFETY OF ALL PERSONS AND PROPERTY. THIS REQUIREMENT SHALL APPLY CONTINUOUSLY AND NOT BE LIMITED TO NORMAL WORKING HOURS. THE CONTRACTOR SHALL DEFEND, INDEMNIFY AND HOLD THE CITY AND ENGINEER HARMLESS FROM ANY AND ALL LIABILITY, REAL OR ALLEGED, IN CONNECTION WITH THE PERFORMANCE OF WORK ON THE PROJECT.
- THE CONTRACTOR SHALL BE REQUIRED TO KEEP ALL CONSTRUCTION ACTIVITIES WITHIN THE RIGHTS-OF-WAY AND EASEMENTS OBTAINED FOR THIS PROJECT UNLESS OTHERWISE SHOWN. THIS SHALL INCLUDE, BUT NOT BE LIMITED TO, VEHICLES AND EQUIPMENT, LIMITS OF TRENCH EXCAVATIONS, AND STOCKPILED MATERIALS.
- IF ANY CULTURAL FEATURES OR ARCHAEOLOGICAL MATERIALS ARE UNCOVERED DURING EXCAVATION WORK, ALL WORK WITHIN ONE HUNDRED FEET OF THESE MATERIALS SHALL BE STOPPED UNTIL A PROFESSIONAL ARCHAEOLOGIST CERTIFIED BY THE SOCIETY OF PROFESSIONAL ARCHAEOLOGY OR SOCIETY OF CALIFORNIA ARCHAEOLOGY TO RECOMMEND APPROPRIATE MITIGATION MEASURES.
- THE CONTRACTOR IS RESPONSIBLE FOR MATCHING EXISTING STREETS, SURROUNDING LANDSCAPE, AND ALL OTHER EXISTING CONDITIONS WITH A SMOOTH TRANSITION IN PAVING, CURBS, GUTTERS, GRADING, STRIPING, ETC. AND TO AVOID ANY ABRUPT OR APPARENT CHANGES IN GRADES OR CROSS SLOPES, LOW SPOTS, TRAFFIC CONTROLS AND HAZARDOUS CONDITIONS.
- ALL EXISTING UTILITIES AND IMPROVEMENTS THAT BECOME DAMAGED DURING CONSTRUCTION SHALL BE COMPLETELY RESTORED TO THE SATISFACTION OF THE CITY, AT THE CONTRACTOR'S SOLE EXPENSE.
- THE CONTRACTOR IS RESPONSIBLE TO REPAIR ANY IRRIGATION LINES OR HEADS DAMAGE DURING CONSTRUCTION AND SHALL REPAIR THE IRRIGATION SYSTEM BACK TO WORKING ORDER. THE CONTRACTOR SHALL COORDINATE WITH THE CITY ON ANY WORK THAT MAY IMPACT EXISTING TREES THAT ARE TO REMAIN.
- ALL EXCAVATED MATERIALS, DEMOLITION DEBRIS AND WASTE GENERATED DURING THE COURSE OF THE PROJECT BECOMES THE PROPERTY OF THE CONTRACTOR AND MUST BE RECYCLED OR DISPOSED OF AT AN APPROPRIATE OFFSITE FACILITY.
- THE ENGINEER ASSUMES NO RESPONSIBILITY BEYOND ADEQUACY OF THE DESIGN CONTAINED HEREIN.

DEMOLITION NOTES

- CONTRACTOR TO REVIEW ALL PROPOSED IMPROVEMENT DRAWINGS PRIOR TO THE START OF DEMOLITION.
- CONCRETE REMOVAL SHALL BE PERPENDICULAR TO PATH OF TRAVEL AND TO NEAREST SCORE MARK FROM LIMIT SHOWN ON PLAN.
- WHEN THE LIMIT OF DEMOLITION IS ALONG HARDSCAPE SURFACES (PCC & AC PAVEMENT, VERTICAL CURB, CURB AND GUTTER, ETC.) THE LIMIT OF DEMOLITION SHALL BE CONSIDERED THE SAWCUT LINE.
- DIMENSIONS ON DEMOLITION PLAN ARE APPROXIMATE AND MAY VARY PER FIELD CONDITIONS.
- CONTRACTOR SHALL REVIEW THE OPERATIONS OF THE EXISTING IRRIGATION SYSTEM WITH THE RESPONSIBLE PARTIES PRIOR TO THE START OF DEMOLITION.
- PROTECT ALL EXISTING UTILITY STRUCTURES, LINES, AND BOXES UNLESS OTHERWISE NOTED ON PLAN.
- EXISTING CURB AND SIDEWALK OUTSIDE THE WORK LIMITS THAT ARE DAMAGED OR DISPLACED SHALL BE REPAIRED OR REPLACED BY THE CONTRACTOR.
- CONTRACTOR SHALL MAINTAIN EXISTING ELECTRICAL SERVICES TO ALL TRAFFIC SIGNALS, STREET LIGHTS, OR OTHER FACILITIES ONSITE THAT WILL REMAIN IN SERVICE DURING CONSTRUCTION.
- CONTRACTOR IS RESPONSIBLE TO LEGALLY DISPOSE OF ALL REMOVED MATERIAL.

EROSION AND SEDIMENT CONTROL NOTES

- THE CONTRACTOR SHALL ADHERE TO THE CONSTRUCTION BEST MANAGEMENT PRACTICES (BMPs) ISSUED BY MONTEREY COUNTY STORMWATER POLLUTION PREVENTION PROGRAM. CONTRACTOR SHALL KEEP EXISTING STREETS FREE FROM DIRT AND DEBRIS DURING ALL PHASES OF CONSTRUCTION. CONTRACTOR SHALL PROVIDE ADEQUATE DUST CONTROL AT ALL TIMES.
- CONTRACTOR IS REQUIRED TO PREPARE A STORM WATER POLLUTION PREVENTION PLAN (SWPPP) FOR THE PROJECT. A QUALIFIED SWPPP PRACTITIONER SHALL PREPARE A RAIN EVENT ACTION PLAN IN ACCORDANCE WITH THE STATE OF CALIFORNIA CONSTRUCTION GENERAL PERMIT TO ENSURE THAT THE SPECIFIC CONSTRUCTION MANAGEMENT PRACTICES (BMP'S) ARE IMPLEMENTED TO ACCOMMODATE EACH PHASE OF CONSTRUCTION. THE SWPPP SHALL BE UPDATED AND KEPT CURRENT AS WORK PROGRESSES AND CONDITIONS CHANGE AND SHALL BE MADE AVAILABLE TO THE CITY OF SEASIDE AND CENTRAL COAST REGIONAL WATER QUALITY CONTROL BOARD INSPECTORS WHEN REQUESTED.
- CONTRACTOR SHALL BE RESPONSIBLE FOR THE PLACEMENT, INSPECTION AND MAINTENANCE OF ALL EROSION CONTROL MEASURES/DEVICES SPECIFIED IN THE EROSION AND SEDIMENT CONTROL PLAN UNTIL PROJECT IS ACCEPTED AS COMPLETE OR NOTICE OF TERMINATION HAS BEEN FILED FOR THE CONSTRUCTION GENERAL PERMIT.
- CONTRACTOR IS RESPONSIBLE FOR PREVENTING SEDIMENT FROM LEAVING THE SITE AND ENTERING THE DOWNSTREAM DRAINAGE SYSTEM. CONTRACTOR SHALL UPDATE SEDIMENT AND EROSION CONTROLS TO REFLECT CHANGING SITE CONDITIONS AND MONITOR EROSION CONTROL EFFECTIVENESS. BASIN AND TRAP SIZES AND ELEVATIONS MAY BE ADJUSTED AS LONG AS THE MINIMUM AREA AND DEPTH FOR SEDIMENT SETTLING AND STORAGE ARE NOT REDUCED. ALL EXISTING, EROSION CONTROL MEASURES SHALL ALSO BE IMPLEMENTED AND MODIFIED AS NECESSARY THROUGHOUT THE PROJECT DURATION.
- ALL LOOSE SOIL AND DEBRIS SHALL BE REMOVED FROM THE STREET AND PAVED AREAS UPON STARTING OPERATIONS AND PERIODICALLY THEREAFTER AS DIRECTED BY THE ENGINEER.
- THE CONTRACTOR WILL BE LIABLE FOR ANY AND ALL DAMAGES TO PUBLICLY AND/OR PRIVATELY OWNED AND MAINTAINED ROADS CAUSED BY CONTRACTOR'S GRADING ACTIVITIES, AND WILL BE RESPONSIBLE FOR THE CLEANUP OF ANY MATERIAL SPILLED ON ANY PUBLIC ROAD ON THE HAUL ROUTE. ADJACENT PUBLIC ROADS SHALL BE KEPT CLEAN OF ALL SOIL AND DEBRIS AT ALL TIMES AND AS REQUIRED BY THE CITY OF SEASIDE. CONTRACTOR SHOULD PROPERLY DOCUMENT EXISTING CONDITIONS OF PUBLIC AND PRIVATE STREETS SUBJECT TO SUCH DAMAGE AND SHALL INSPECT THE SITE DAILY AND NOTE CONDITIONS OF EROSION CONTROL INCLUDING REPAIRS: DATE, TIME, LOCATION, AND DESCRIPTION.
- STOCKPILES OF EARTH AND OTHER CONSTRUCTION RELATED MATERIALS MUST BE PROTECTED FROM BEING TRANSPORTED FROM THE SITE BY THE FORCES OF WIND OR WATER.

ABBREVIATIONS

AB	AGGREGATE BASE	FL	FLOW LINE	PCC	POINT OF COMPOUND CURVE	Shld	SHOULDER
AC	ASPHALT CONCRETE	FOC	FACE OF CURB	PRC	POINT OF REVERSE CURVE	SS	SANITARY SEWER
APPROX	APPROXIMATE	FT	FOOT/FEET	PSI	POUNDS PER SQUARE INCH	STA	STATION
BC	BEGIN HORIZONTAL CURVE	GB	GRADE BREAK	R	RADIUS	STD	STANDARD
BOC	BACK OF CURB	HMA	HOT MIX ASPHALT	R&R	REMOVE AND REPLACE	ST.	STREET
BEG	BEGIN	INV	INVERT	RC	RELATIVE COMPACTION	SW	SIDEWALK
BOW	BACK OF WALK	LF	LINEAR FEET	RD	ROAD	TC	TOP OF CURB
C&G	CURB AND GUTTER	Lt	LEFT OF STATION LINE	Reinf	REINFORCEMENT	Tot	TOTAL
CB	CATCH BASIN	MAX	MAXIMUM	Ret	RETAINING	TYP	TYPICAL
CONC.	CONCRETE	MH	MANHOLE	ROW / R/W	RIGHT OF WAY	Var	VARIES
EC	END HORIZONTAL CURVE	MIN	MINIMUM	RRFB	RECTANGULAR RAPID FLASHING	W	WATER
ELEV	ELEVATION	NTS	NOT TO SCALE		BEACON	WV	WATER VALVE
EP	EDGE OF PAVEMENT	OD	OUTSIDE DIAMETER	Rt	RIGHT OF STATION LINE	w/	WITH
EXIST/(E)	EXISTING	OFF	OFFSET	SD	STORM DRAIN		

100% BID DOCUMENTS



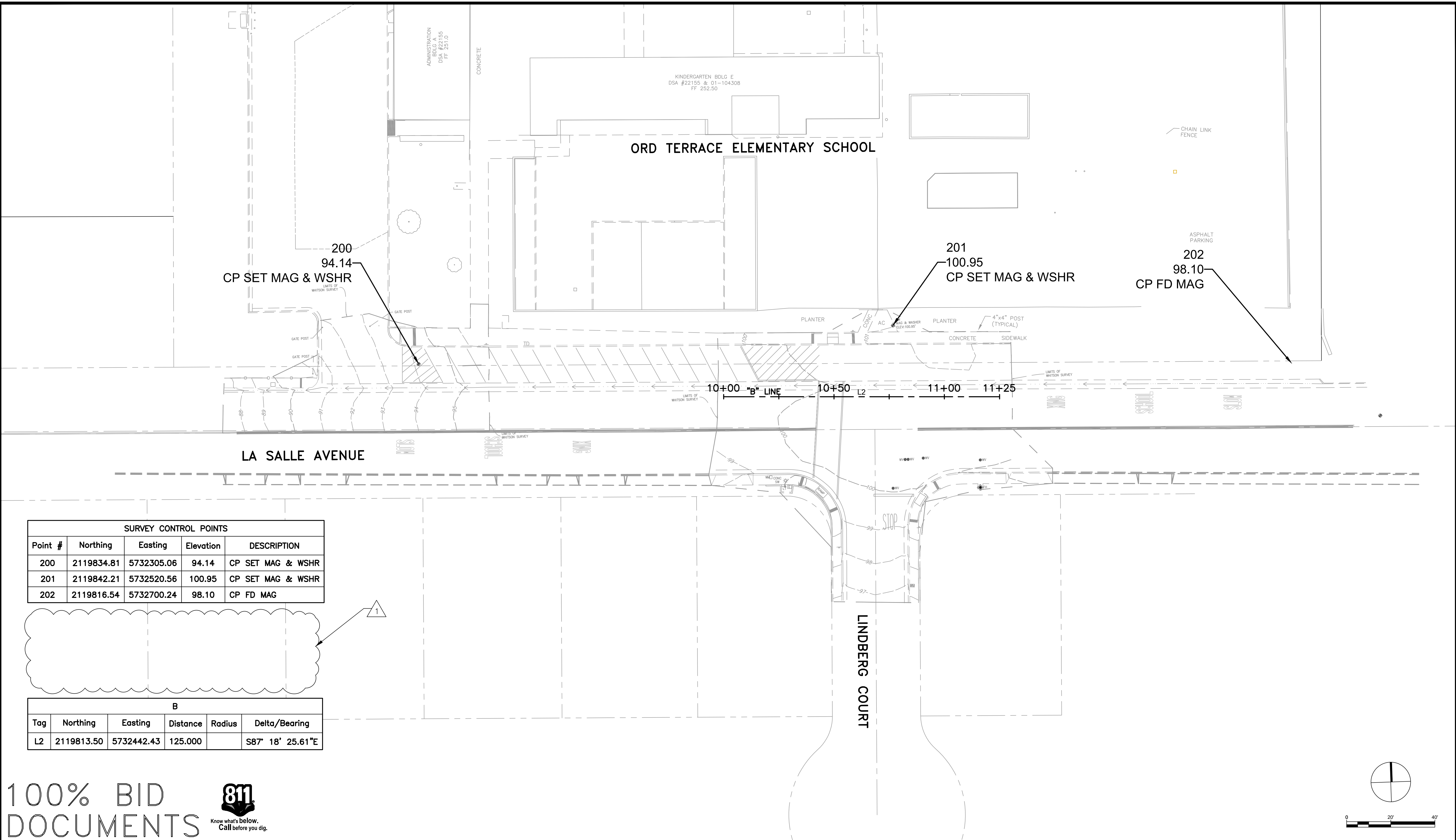
Parisi
TRANSPORTATION CONSULTING
800 Bancroft Way, Ste 203
Berkeley, CA 94710
(510) 343-6400

DRAWN: VM	CHECKED: AL
DESIGNED: VM	APPROVED: AG



**CITY OF SEASIDE
ORD TERRACE ELEMENTARY SCHOOL CROSSING
GENERAL NOTES**

REVISIONS		DATE	SCALE
NO.	DESCRIPTION	05/05/2023	NTS
		PMX PROJECT NO. 22055	
		DRAWING T-2	
		SHEET NO. 2 OF 9	



SURVEY CONTROL POINTS				
Point #	Northing	Easting	Elevation	DESCRIPTION
200	2119834.81	5732305.06	94.14	CP SET MAG & WSHR
201	2119842.21	5732520.56	100.95	CP SET MAG & WSHR
202	2119816.54	5732700.24	98.10	CP FD MAG

B					
Tag	Northing	Easting	Distance	Radius	Delta/Bearing
L2	2119813.50	5732442.43	125.000		S87° 18' 25.61"E

100% BID DOCUMENTS



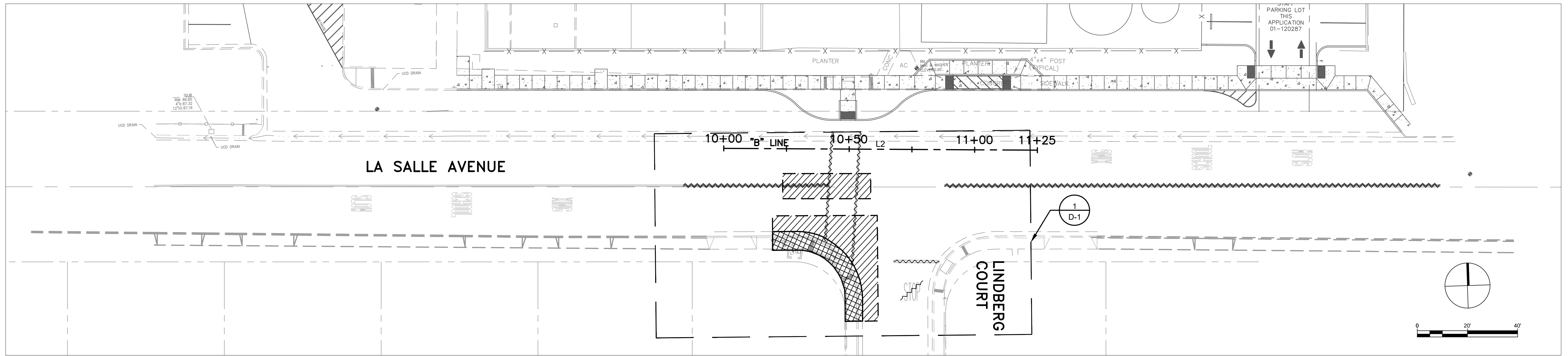
Parisi
TRANSPORTATION CONSULTING
800 Bancroft Way, Ste 203
Berkeley, CA 94710
(510) 343-6400



CITY OF SEASIDE
ORD TERRACE ELEMENTARY SCHOOL CROSSING
SURVEY CONTROL

REVISIONS		DATE	SCALE
NO.	DESCRIPTION	05/05/2023	1" = 20"
		PMX PROJECT NO.	22055
		DRAWING	T-3
		SHEET NO.	3 OF 9

DRAWN: VM
DESIGNED: VM
CHECKED: AL
APPROVED: AG







GENERAL NOTES (THIS SHEET ONLY)

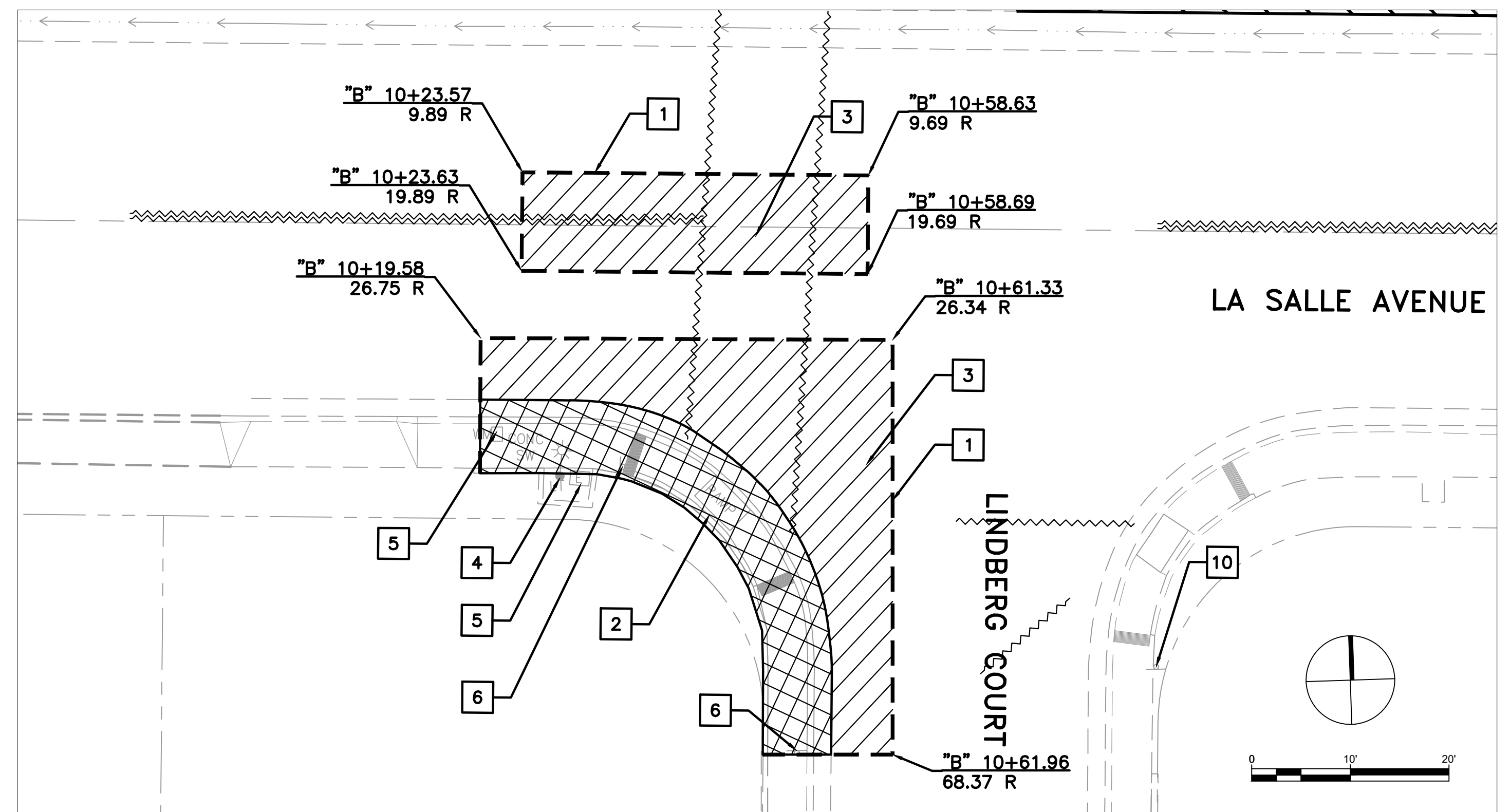
1. DEMOLITION SHALL BE WITHIN THE LIMITS OF WORK SHOWN, AS APPROVED BY ENGINEER
2. ALL UTILITIES TO REMAIN SHALL BE PROTECTED

CONSTRUCTION NOTES (THIS SHEET ONLY)

- 1 SAWCUT LINE TO THE NEAREST JOINT
- 2 REMOVE CONCRETE SIDEWALK, CURB AND GUTTER
- 3 REMOVE ROADWAY ASPHALT
- 4 PROTECT EXISTING LIGHT POST
- 5 PROTECT EXISTING PULLBOX IN PLACE
- 6 REMOVE EXISTING SIGN AND POST

LEGEND

-  LIMITS OF CONCRETE REMOVAL
-  LIMITS OF AC REMOVAL
-  SAWCUT LINE
-  REMOVE STRIPING



DETAIL 1: CONCRETE AND AC DEMOLITION

100% BID DOCUMENTS

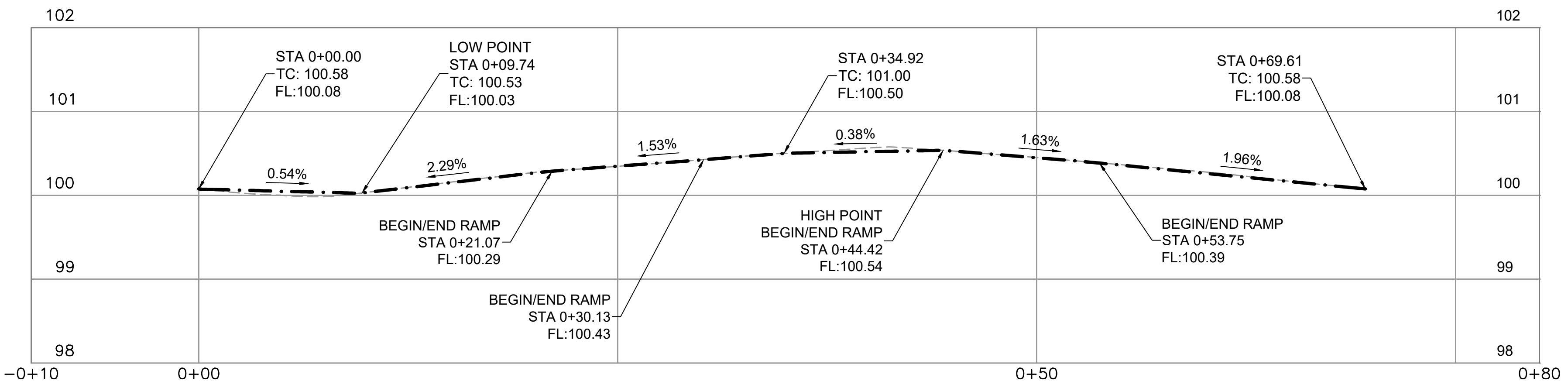
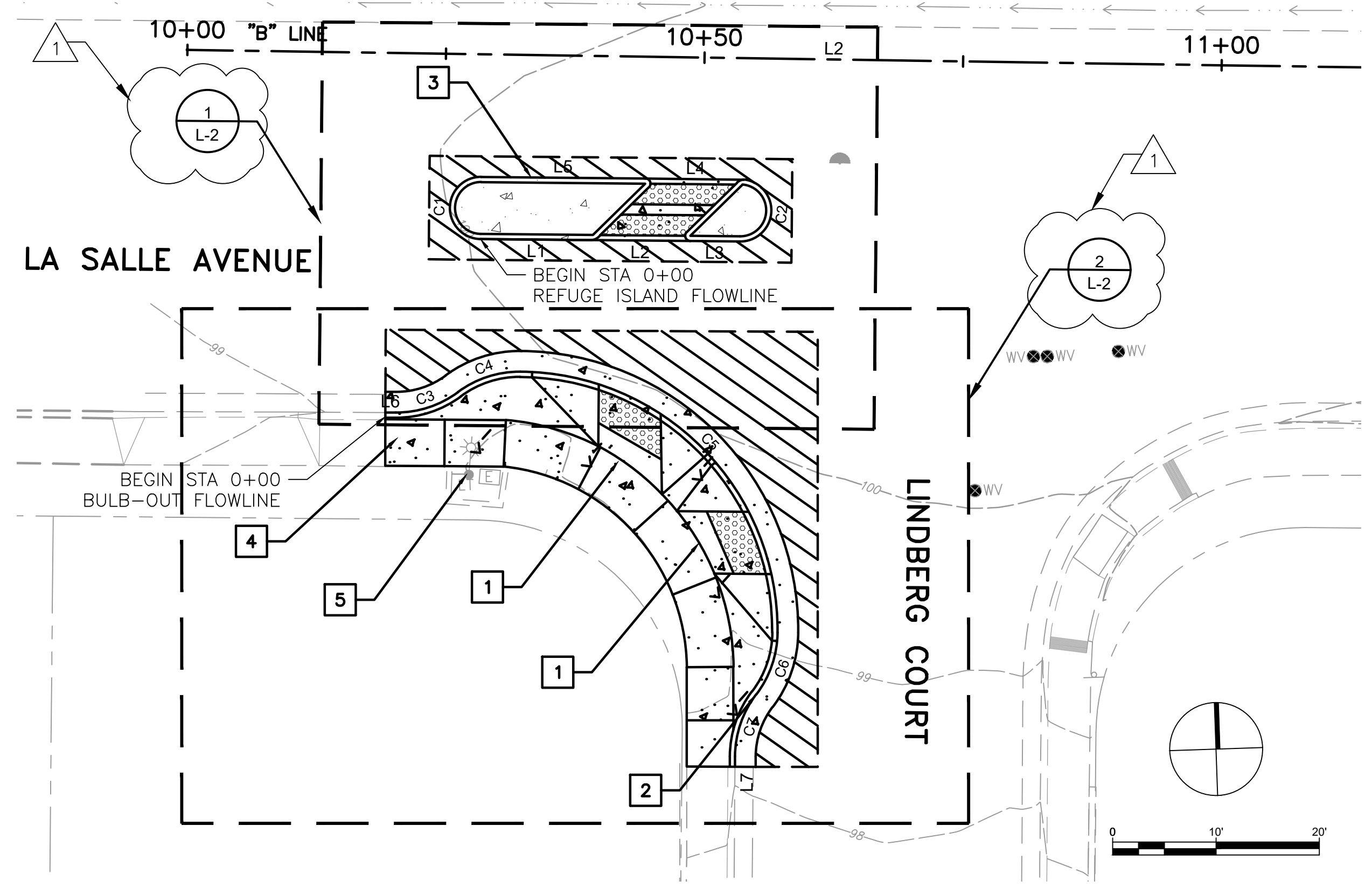


Parisi
TRANSPORTATION CONSULTING
800 Bancroft Way, Ste 203
Berkeley, CA 94710
(510) 343-6400

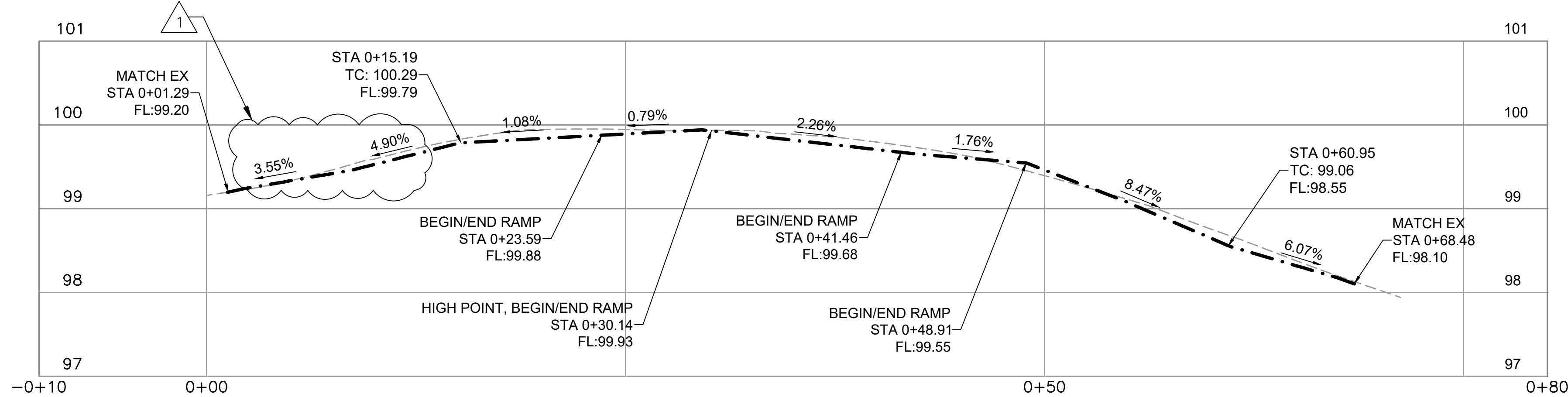


**CITY OF SEASIDE
ORD TERRACE ELEMENTARY SCHOOL CROSSING
DEMOLITION PLAN**

REVISIONS		DATE	SCALE
NO.	DESCRIPTION	05/05/2023	VARIABLES
		PTC PROJECT NO. 22055	
		DRAWING D-1	
		SHEET NO. 4 OF 9	



REFUGE ISLAND FLOWLINE PROFILE VIEW - SCALE 1V:2H



BULB-OUT FLOWLINE PROFILE VIEW - SCALE 1V:2H

GENERAL NOTES (THIS SHEET ONLY)

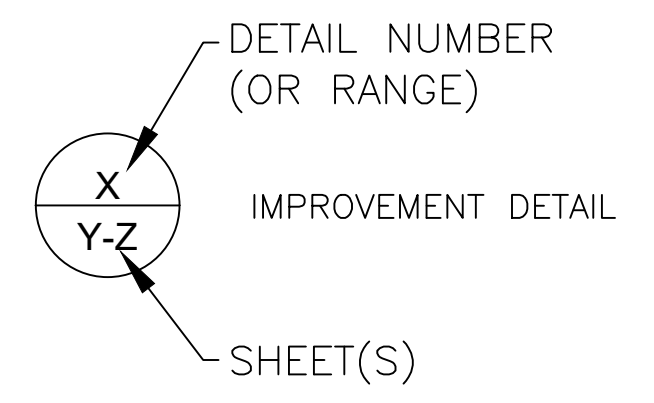
1. CURB AND GUTTER PER CALTRANS STANDARD PLANS, 2022
2. CURB RAMPS PER CALTRANS STANDARD PLANS, 2022

LEGEND

- NEW CONCRETE [4" CONC/6" AB]
- AC PAVEMENT [2" AC/6" AB]
- LIMITS OF AC PLUG

CONSTRUCTION NOTES (THIS SHEET ONLY)

- 1 INSTALL CASE A CURB RAMP
- 2 INSTALL TYPE A2-6 CURB AND GUTTER (CD-1, DET 1)
- 3 INSTALL REFUGE ISLAND WITH DIAGONAL CROSSING (CD-1, DET-6)
- 4 ADJUST PULLBOX TO GRADE
- 5 PROTECT IN PLACE EXISTING LUMINAIRE



REFUGE ISLAND CURB ALIGNMENT					
TAG	NORTHING	EASTING	DELTA/BEARING	DISTANCE	RADIUS
C1	5732470.42	5732470.42	S02° 22' 07.33"W	9.425	3.00
L1	2119794.32	5732470.17	S87° 37' 54.61"E	10.65	
L2	2119793.88	5732480.81	S87° 37' 54.61"E	9.62	
L3	2119793.48	5732490.43	S87° 37' 54.61"E	4.79	
C2	5732495.21	5732495.21	N07° 49' 05.50"E	8.854	3.00
L4	2119799.20	5732496.03	N87° 18' 52.66"W	9.77	
L5	2119799.66	5732486.26	N87° 37' 54.56"W	15.86	

BULB-OUT CURB ALIGNMENT					
TAG	NORTHING	EASTING	DELTA/BEARING	DISTANCE	RADIUS
L6	2119777.87	5732460.43	S87° 52' 54.13"E	1.00	
C3	5732461.43	5732461.43	N73° 41' 00.05"E	6.435	10.00
C4	5732467.50	5732467.50	N73° 41' 00.05"E	6.435	10.00
C5	5732473.57	5732473.57	S42° 47' 29.90"E	39.349	25.00
C6	5732497.63	5732497.63	S20° 43' 31.67"W	6.432	10.00
C7	5732495.39	5732495.39	S20° 43' 10.34"W	6.434	10.00
L7	2119743.57	5732493.15	S01° 43' 43.81"W	5.00	

100% BID DOCUMENTS



Parisi
TRANSPORTATION CONSULTING

800 Bancroft Way, Ste 203
Berkeley, CA 94710
(510) 343-6400

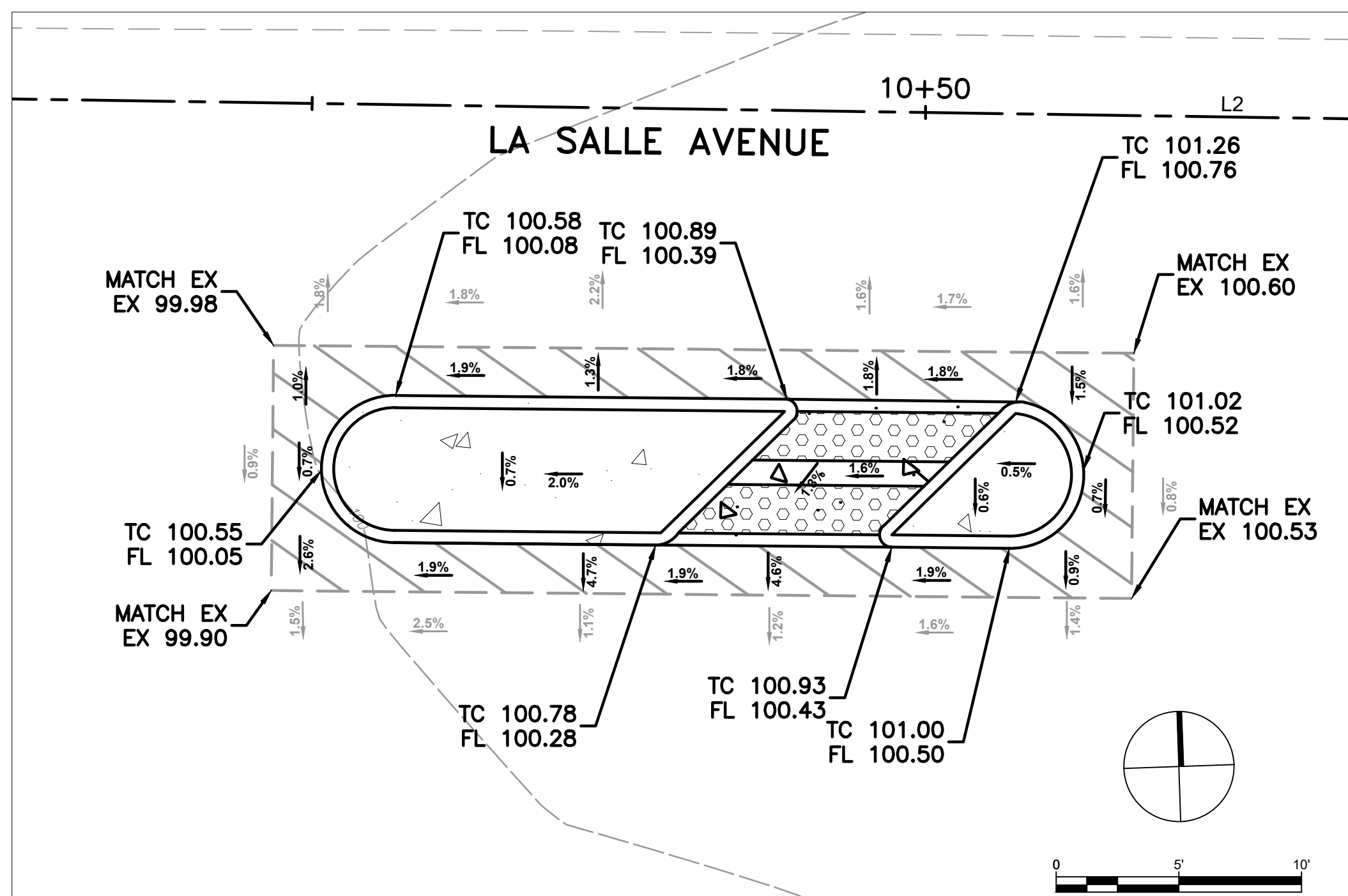
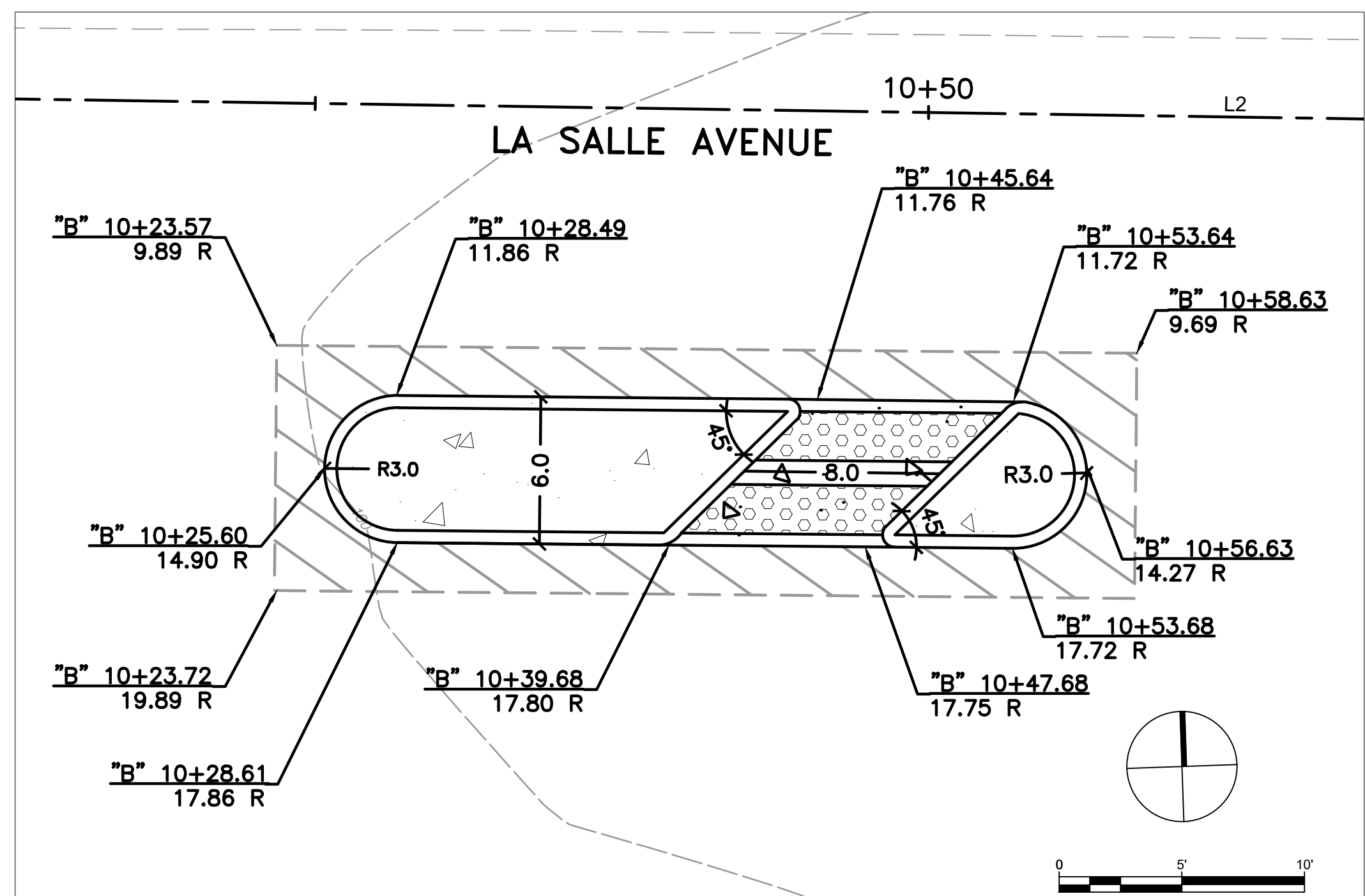
DRAWN: AG
DESIGNED: AG

CHECKED: AL
APPROVED: AG



CITY OF SEASIDE
ORD TERRACE ELEMENTARY SCHOOL CROSSING
LAYOUT PLAN

REVISIONS		DATE	SCALE
	UPDATED ARROW DIRECTION AND DETAIL LABEL	05/05/2023	1" = 10'
NO.		PTC PROJECT NO.	
		22055	
		DRAWING	
		L-1	
		SHEET NO.	
		5 OF 9	



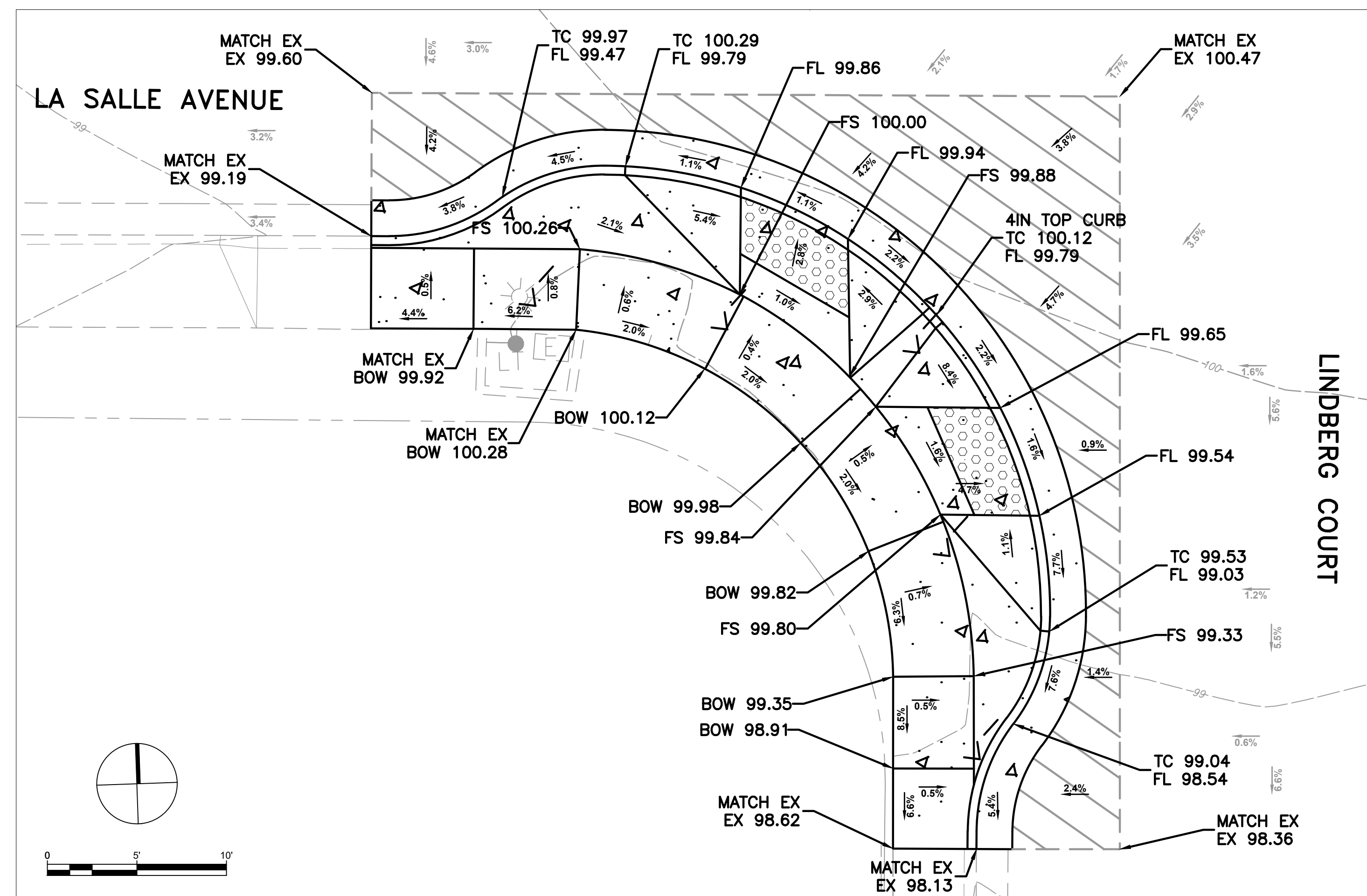
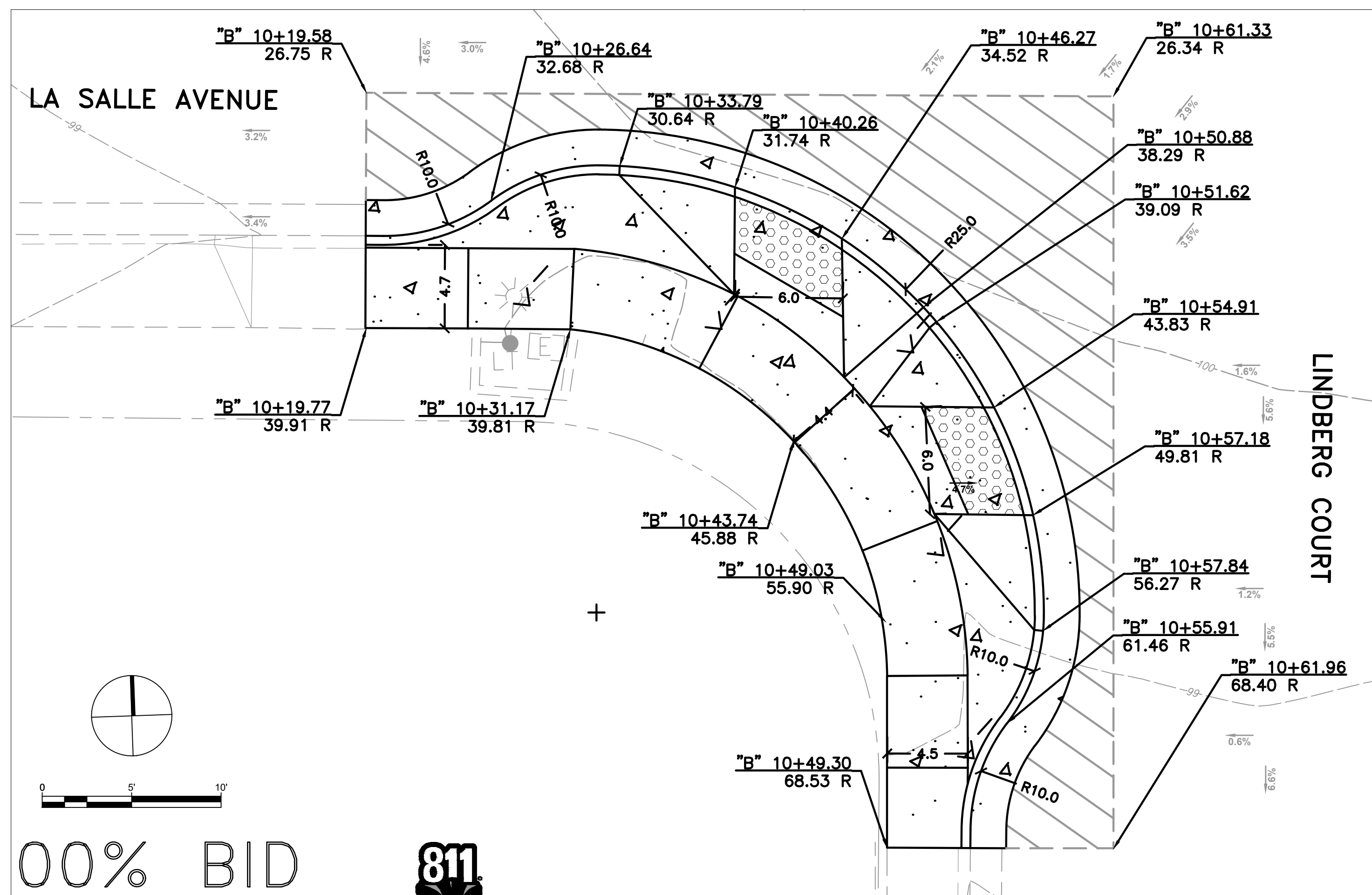
GENERAL NOTES (THIS SHEET ONLY)

- 1. CURB AND GUTTER PER CALTRANS STANDARD PLANS, 2022
- 2. CURB RAMPS PER CALTRANS STANDARD PLANS, 2022

LEGEND

-
-
-

DETAIL 1: ORD TERRACE SCHOOL DRIVEWAY CURB RAMP HORIZONTAL CONTROL AND GRADING DETAIL



DETAIL 2: LINDBERG COURT BULB-OUT HORIZONTAL CONTROL AND GRADING DETAIL

100% BID DOCUMENTS



Know what's Below. Call before you dig.

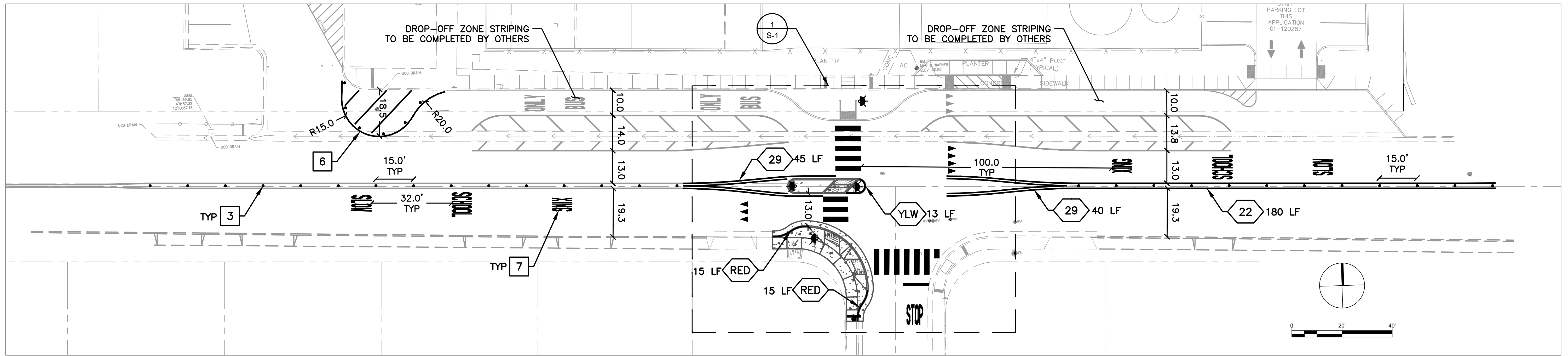
Parisi
TRANSPORTATION CONSULTING

800 Bancroft Way, Ste 203
Berkeley, CA 94710
(510) 343-6400



CITY OF SEASIDE
ORD TERRACE ELEMENTARY SCHOOL CROSSING
CURB RAMP DETAILS

REVISIONS		DATE	SCALE
NO.	DESCRIPTION	05/05/2023	1" = 5'
		PTC PROJECT NO. 22055	
		DRAWING L-2	
		SHEET NO. 6 OF 9	



GENERAL NOTES (THIS SHEET ONLY)

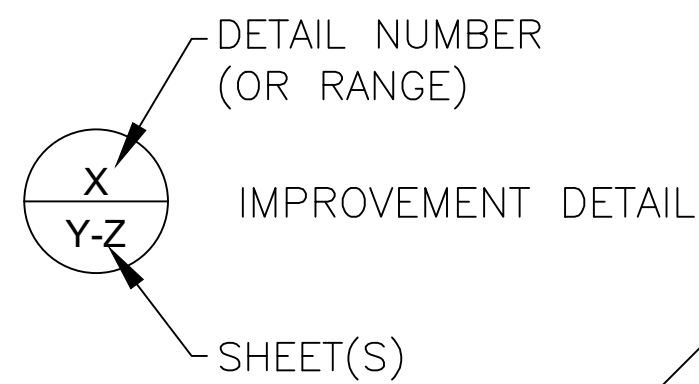
1. PAVEMENT MARKINGS PER CALTRANS STANDARD PLANS A20A-E AND A24A-F
2. NEW MARKINGS ARE SHOWN IN BLACK. EXISTING MARKINGS TO BE MAINTAINED ARE SHOWN IN GRAY
3. CONTRACTOR SHALL PROVIDE MINIMUM TWO WORKING DAY NOTICE TO ALLOW THE CITY TRAFFIC ENGINEER TO REVIEW AND APPROVE ALL STRIPING AND MARKINGS AS "CAT-TRACKS" PRIOR TO PLACING PERMANENT MARKINGS

CONSTRUCTION NOTES (THIS SHEET ONLY)

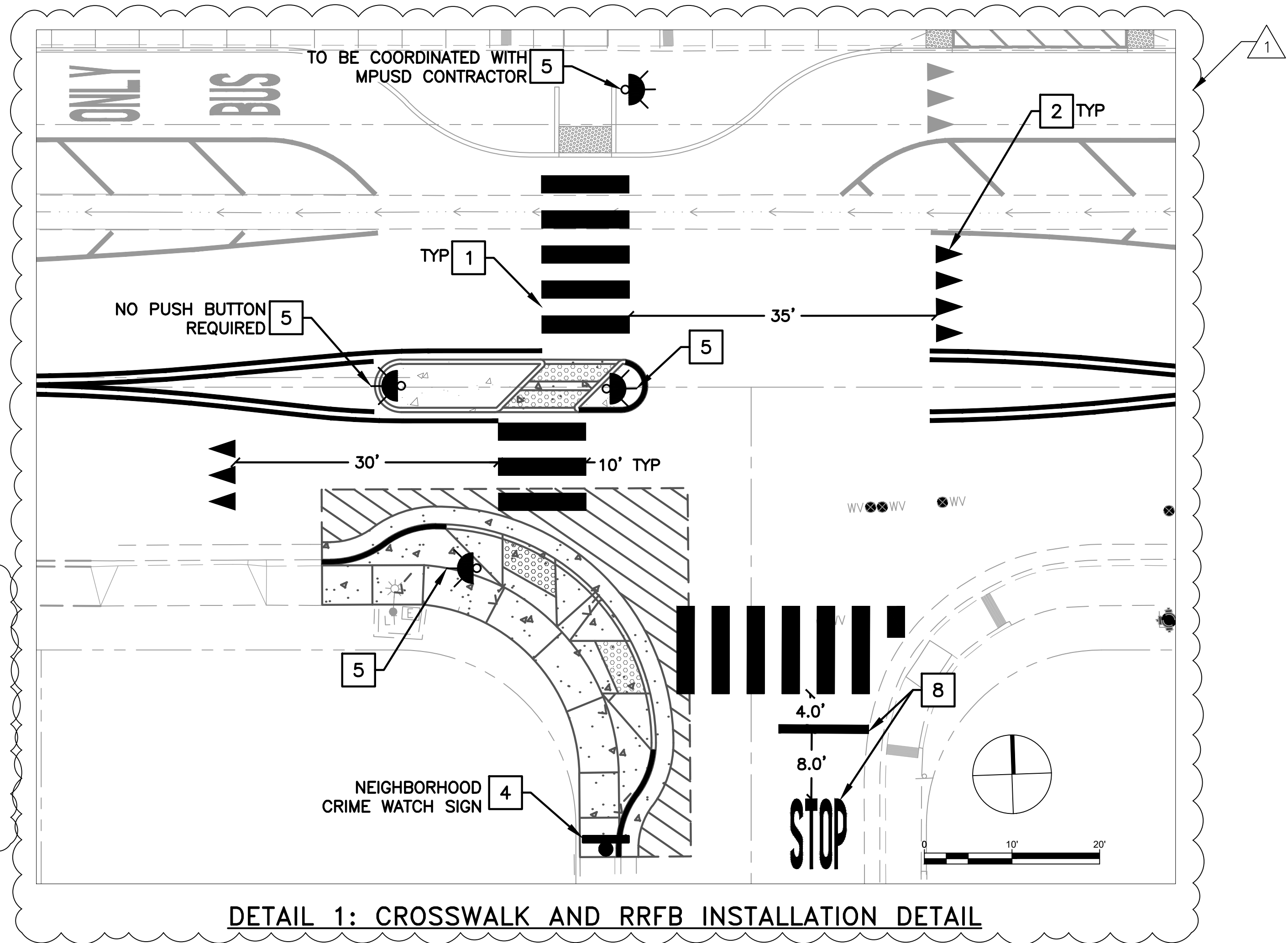
1. INSTALL YELLOW CONTINENTAL CROSSWALK (CD-2 DET 8)
2. INSTALL WHITE YIELD MARKINGS (CD-2 DET 9)
3. INSTALL YELLOW DELINEATORS SPACED 15' (CD-1 DET 7)
4. INSTALL NEW SIGN AND POST
5. INSTALL RECTANGULAR RAPID FLASHING BEACON ON 18FT TALL 4" STEEL POST (CD-2 DET 10)
6. INSTALL PAINTED BULB-OUT WITH WHITE DELINEATORS SPACED AT 10' AND 6" WHITE DIAGONAL STRIPES SPACED 10' O.C.
7. REFRESH "SLOW SCHOOL XING" STENCILS
8. INSTALL "STOP" STENCILS AND STOP BAR

LEGEND & ABBREVIATIONS

- XX CALTRANS STRIPING DETAIL
- YLW YELLOW PAINTED CURB
- RED RED PAINTED CURB
- LF LINEAR FEET
- TYP TYPICAL



SIGN SCHEDULE	
POST	QUANTITY
S1-1 [SCHOOL]	4
W16-7P [LEFT ARROW]	2
W16-7P [RIGHT ARROW]	2
NEIGHBORHOOD WATCH	1



DETAIL 1: CROSSWALK AND RRFB INSTALLATION DETAIL

100% BID DOCUMENTS



Parisi
TRANSPORTATION CONSULTING

800 Bancroft Way, Ste 203
Berkeley, CA 94710
(510) 343-6400

DRAWN: VM
DESIGNED: AG

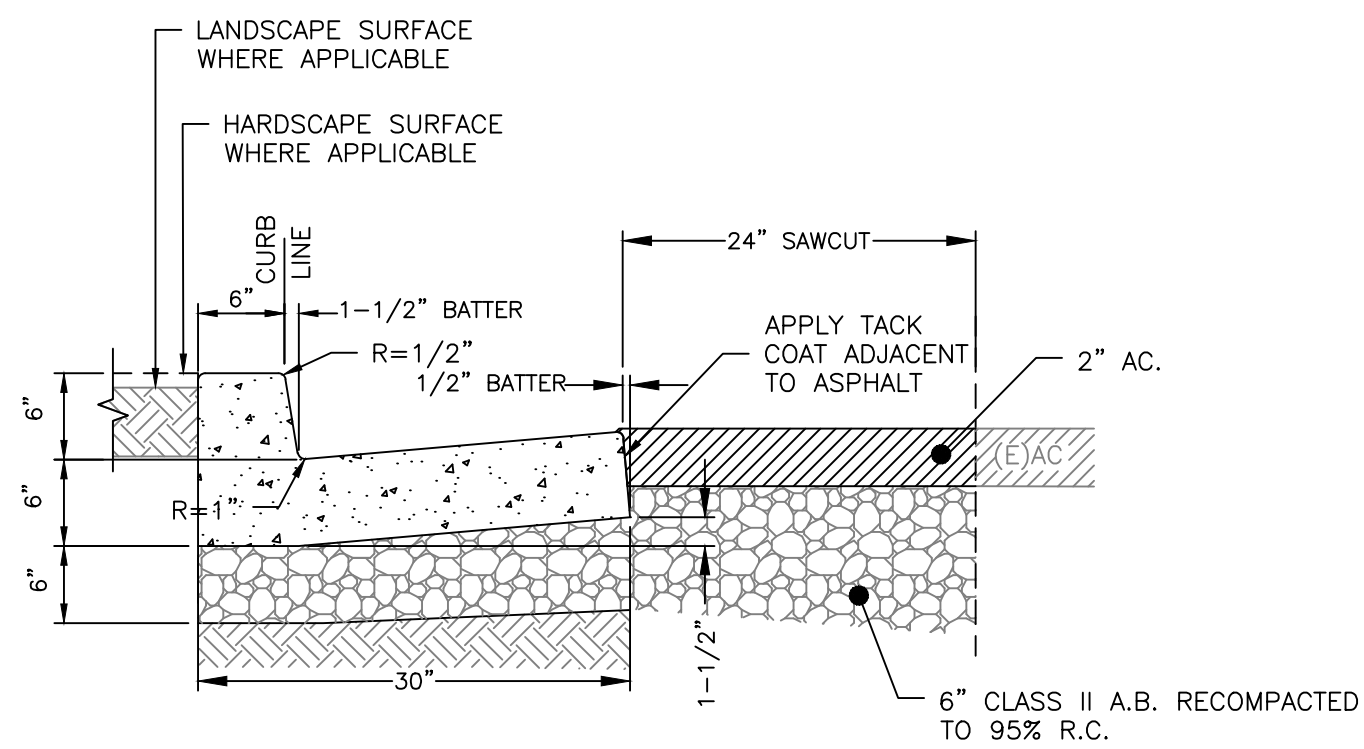
CHECKED: AL
APPROVED: AG



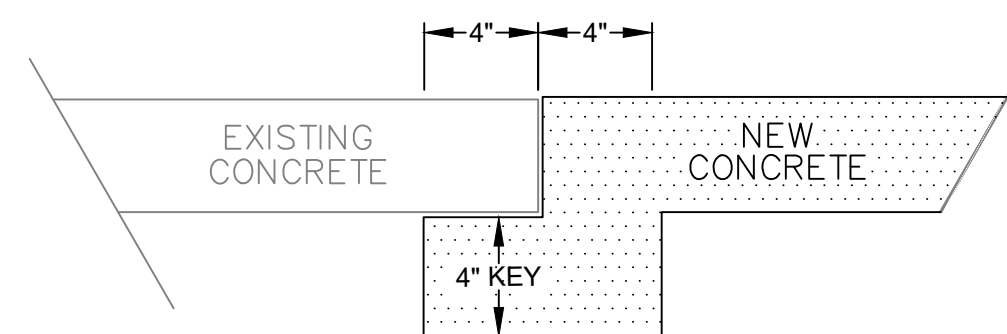
CITY OF SEASIDE
ORD TERRACE ELEMENTARY SCHOOL CROSSING
STRIPING AND SIGNAGE PLAN WITH RRFB DETAILS

REVISIONS		DATE	SCALE
NO.	DESCRIPTION	05/05/2023	VARIES
1	ADDED SIGN SCHEDULE AND UPDATED CALLOUT [6]		
2	ADDED CALLOUT [4] INTO DETAIL 1 VIEWPORT		

PTC PROJECT NO. 22055
DRAWING **S-1**
SHEET NO. **7 OF 9**

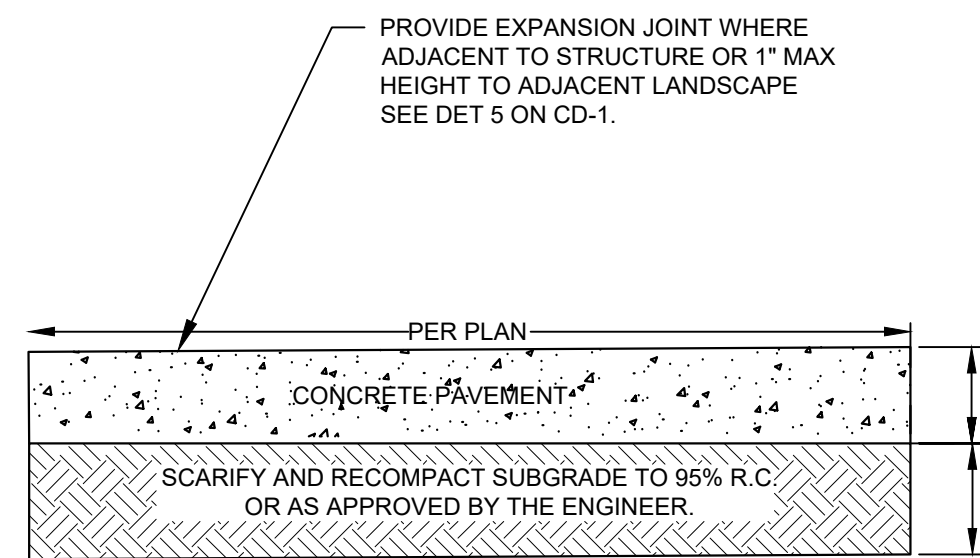


DETAIL 1: TYPE 'A2-6' CURB



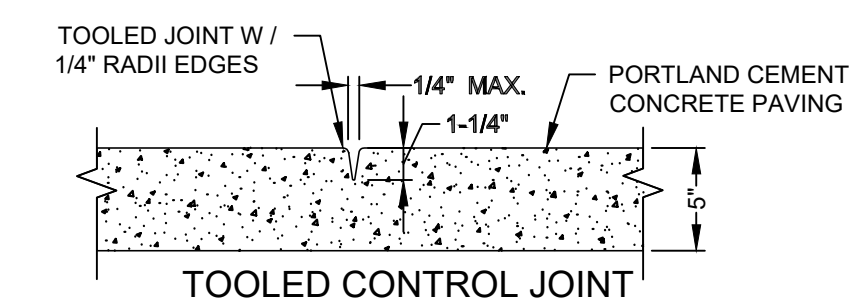
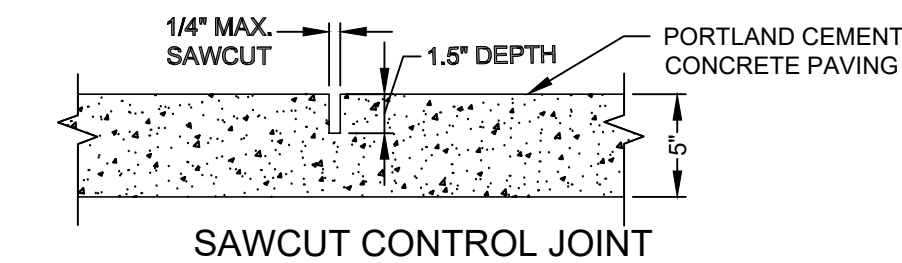
4" x 4" KEY UNDER EXISTING CONCRETE, WHEN POURING NEW CONCRETE TO EXISTING SIDEWALK/ CURB/ GUTTER

DETAIL 2: 4 IN KEY



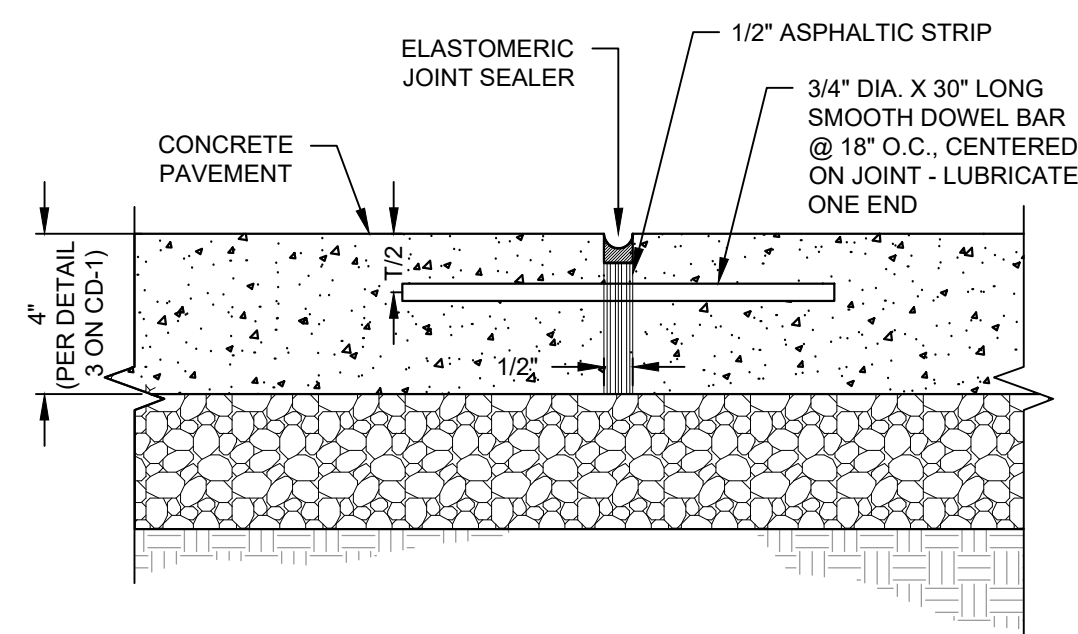
- PROVIDE EXPANSION JOINT WHERE ADJACENT TO STRUCTURE OR 1' MAX HEIGHT TO ADJACENT LANDSCAPE SEE DET 5 ON CD-1.
- NOTES:
1. ALL TREAD SURFACES SHALL BE SLIP RESISTANT
 2. AS APPLICABLE, REUSE OF EXISTING BASEROCK SHALL BE APPROVED BY THE ENGINEER
 3. A 4 IN KEY SHALL BE INSTALLED UNDER EXISTING CONCRETE. SEE DET 2 ON CD-1
 4. CONSTRUCTION JOINTS SHALL BE 16' ON CENTER. SEE DET 4 ON CD-1.
 5. CONCRETE COMPRESSIVE STRENGTH TO BE 3000 PSI FOR SIDEWALKS; 4000 PSI FOR DRIVEWAY APPROACHES AND CURB AND GUTTER.

DETAIL 3: CONCRETE SIDEWALK



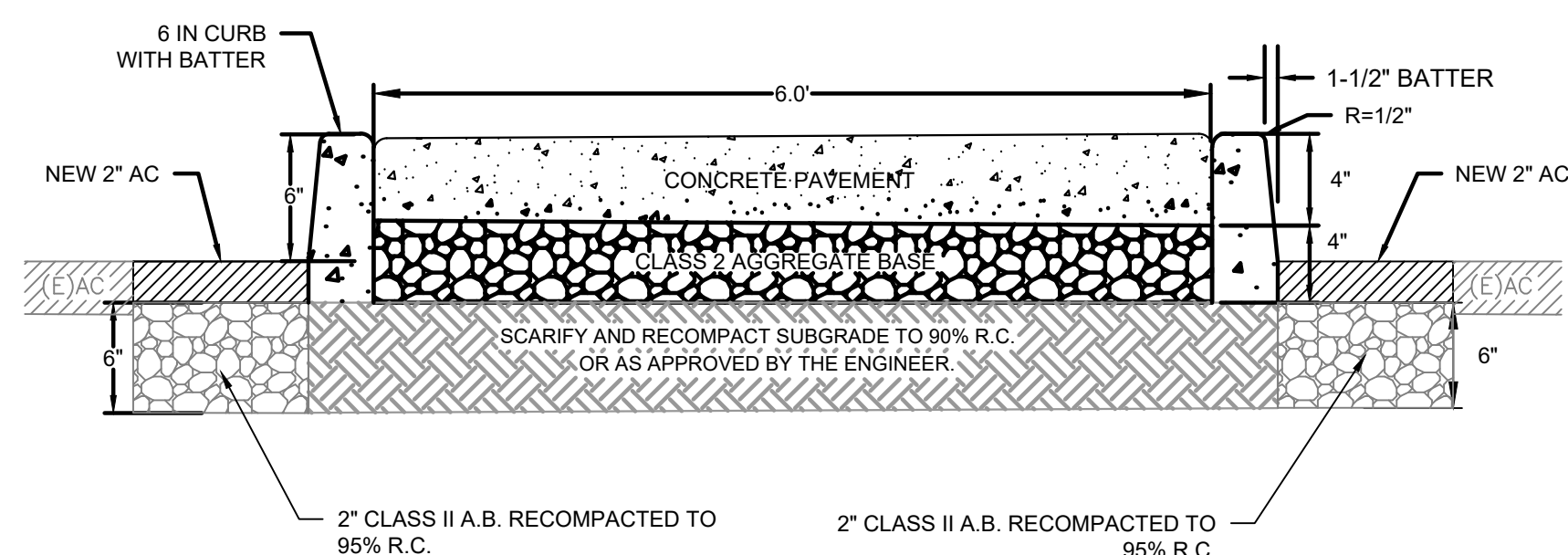
- NOTES:
1. CONTROL JOINTS SHALL BE CONSTRUCTED 4' ON CENTER.
 2. CONSTRUCT CONTROL JOINTS WITHIN 24 HOURS OF POUR.
 3. SEE PLAN FOR LOCATION OF CONTROL JOINTS.

DETAIL 4: CONTROL JOINT FOR PEDESTRIAN CONCRETE PAVEMENT

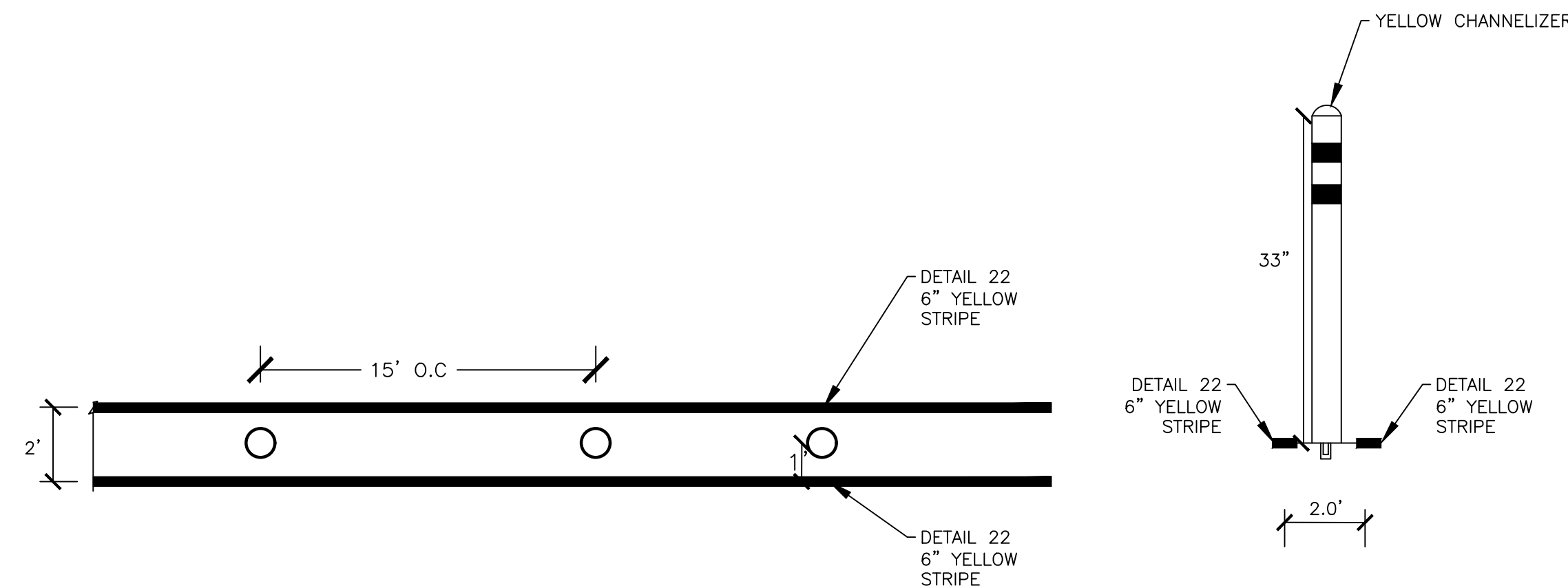


- NOTES:
1. REFER TO DETAIL 3 ON CD-1 FOR THICKNESS OF CONCRETE/PAVEMENT.
 2. EXPANSION JOINTS TO BE INSTALLED AT 16' ON CENTER.
 3. INSTALL EXPANSION JOINTS WHERE NEW CONCRETE MEETS EXISTING CONCRETE.

DETAIL 5: EXPANSION JOINT FOR CONCRETE PAVEMENT



DETAIL 6: REFUGE ISLAND SECTION VIEW



DETAIL 7: BOLLARDS AND CENTERLINE STRIPING

100% BID DOCUMENTS



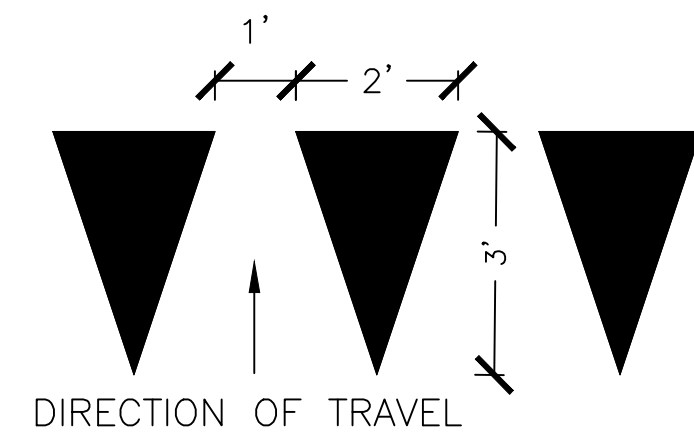
Know what's below. Call before you dig.

Parisi
TRANSPORTATION CONSULTING
800 Bancroft Way, Ste 203
Berkeley, CA 94710
(510) 343-6400

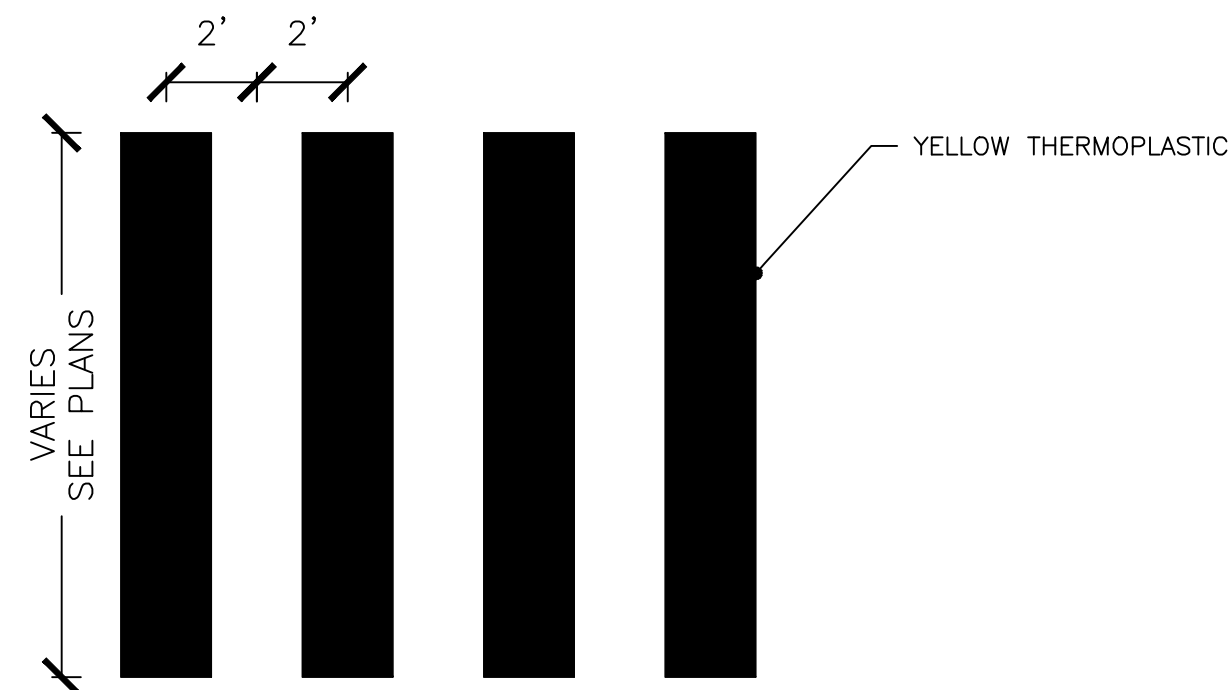


CITY OF SEASIDE
LA SALLE AVENUE CROSSINGS
CONSTRUCTION DETAILS

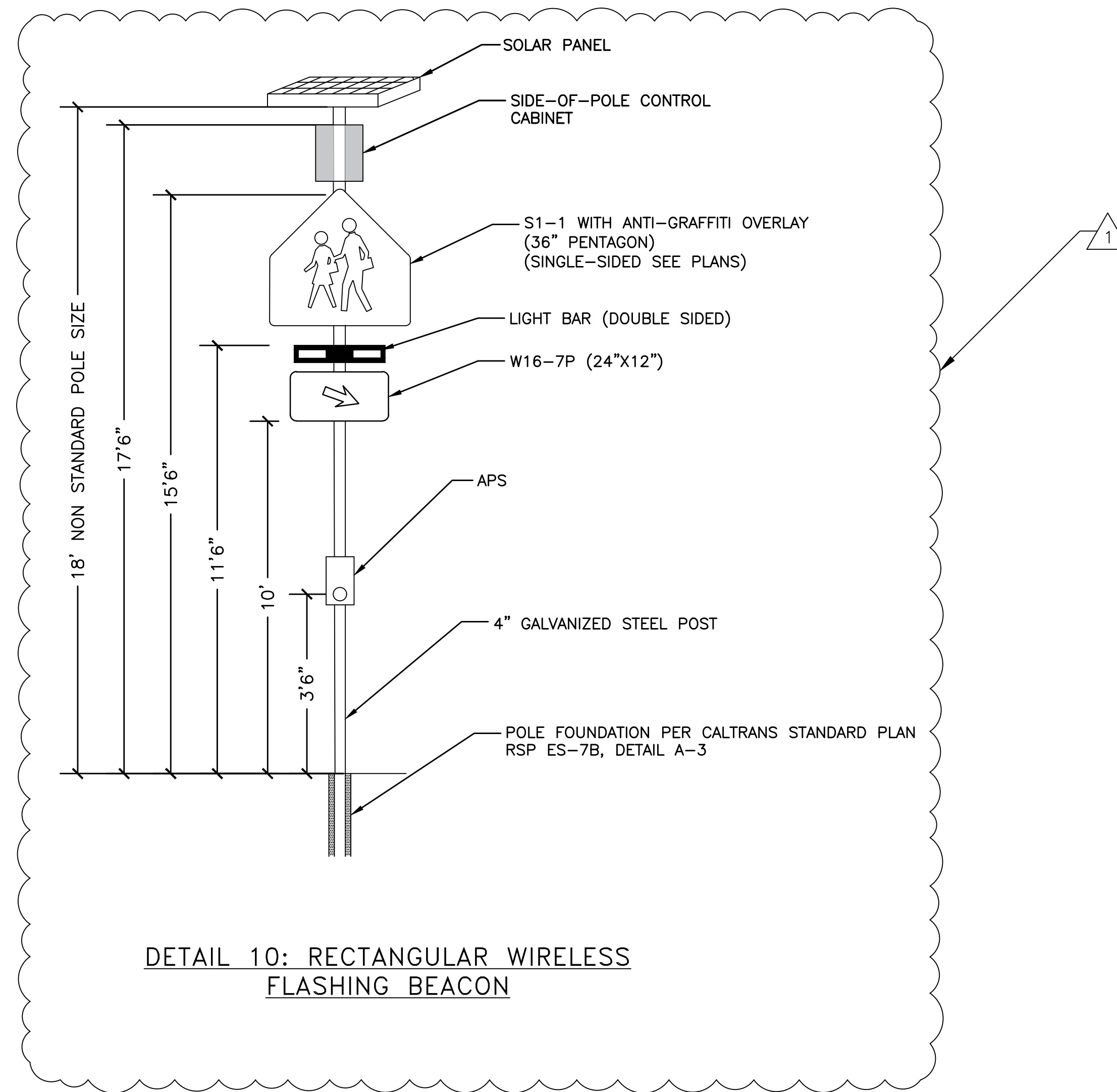
REVISIONS		DATE	SCALE
NO.	DESCRIPTION	05/05/2023	NTS
		PTC PROJECT NO.	22055
		DRAWING	CD-1
		SHEET NO.	8 OF 9



DETAIL 8: YIELD LINE



DETAIL 9: CONTINENTAL CROSSWALK



DETAIL 10: RECTANGULAR WIRELESS FLASHING BEACON

100% BID DOCUMENTS



Parisi
TRANSPORTATION CONSULTING
800 Bancroft Way, Ste 203
Berkeley, CA 94710
(510) 343-6400



CITY OF SEASIDE
LA SALLE AVENUE CROSSINGS
CONSTRUCTION DETAILS

REVISIONS		DATE	SCALE
1	ADDED SIZE DETAILS FOR SIGNS AND POLE	05/05/2023	NTS
NO. DESCRIPTION		PTC PROJECT NO. 22055	
		DRAWING	CD-2
		SHEET NO.	9 OF 9