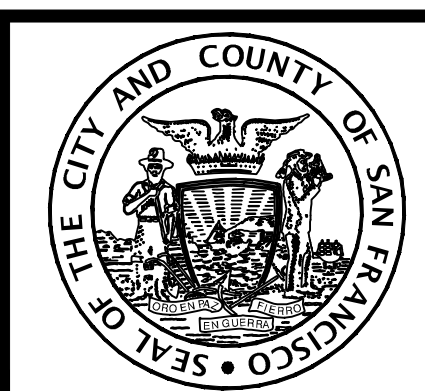


INDEX OF DRAWINGS

DWG. NO.	REV. NO.	FILE NO.	DRAWING TITLE
G-0.5		115,322.5	CONTRACT SERVICE ORDER 5 - INDEX OF DRAWINGS
R-22		115,347	CONTRACT SERVICE ORDER 5 - DISTRICT 6 - LOCATIONS SHEET
R-23		115,348	CONTRACT SERVICE ORDER 5 - DISTRICT 6 - PARTIAL MAP 1 OF 1
R-24		115,349	CONTRACT SERVICE ORDER 5 - DISTRICT 8 - LOCATIONS SHEET
R-25		115,350	CONTRACT SERVICE ORDER 5 - DISTRICT 8 - PARTIAL MAP 1 OF 1
T-1		115371.49	SPEAR ST. - FOLSOM ST. TO HARRISON ST. - BEALE ST. - BRYANT ST. AND DELANCEY ST. TO END
T-2		115371.50	CLARENCE ST. - END TO TOWNSEND ST. - JESSIE ST. - 4TH ST. TO JESSIE ST. EAST TO END
T-3		115371.51	CLARA ST. - 4TH ST. TO 5TH ST. - JULIA ST. - MISSION ST. TO MINNA ST.
T-4		115371.52	LASKIE ST. - MISSION ST. TO END - MINNA ST - 8TH ST. TO 9TH ST.
T-5		115371.53	NATOMA - 6TH ST. TO 7TH ST. - HALLAM ST. - FOLSOM ST. TO END AND BRUSH PL. - HALLAM TO END
T-6		115371.54	CHELSEY ST. - HARRISON ST. TO HOMER ST. & HOMER ST. TO END - NATOMA ST. - 11TH ST. TO END
T-7		115371.55	23RD ST. - AMES ALY. TO VALENCIA ST. - 19TH ST. - DOUGLASS ST. TO COLLINGWOOD ST.
T-8		115371.56	21ST ST. - CASTRO ST. TO SANCHEZ ST.
T-9		115371.57	29TH ST. - NOE ST. TO DOLORES ST.
T-10		115371.58	BEACON ST. - DIAMOND ST. TO MIGUEL ST.
T-11		115371.59	ARLINGTON ST. - HIGHLAND AVE. TO MATEO ST.

NO.	DATE	DESCRIPTION	BY	APP.
TABLE OF REVISIONS				

REFERENCE INFORMATION
& FILE NO. OF SURVEYS



BUREAU OF ENGINEERING
CITY & COUNTY OF SAN FRANCISCO
SAN FRANCISCO PUBLIC WORKS
49 SOUTH VAN NESS AVENUE, 8TH FLOOR
SAN FRANCISCO, CA 94103

Acting Section Mgr:	DEANNA CALLEROS	Date:	12/13/2022
Deputy Bureau Mgr:	FERNANDO CISNEROS		12/13/2022
Acting Bureau Mgr:	IQBAL DHAPA		12/13/2022

DESIGNED:	M. WILLIAMS	DATE:	7/22
DRAWN:	C. HOLMAN	DATE:	7/22
CHECKED:	D. CHAN	DATE:	7/22



SCALE:
NONE

SHEET OF SHEETS
1 OF 16

AS-NEEDED PAVEMENT PRESERVATION CONTRACT 4B
(GENERAL AS-NEEDED CONTRACT G18)

CONTRACT SERVICE ORDER 5
INDEX OF DRAWINGS

CONTRACT ID:	1000016821
DRAWING NO.:	G-0.5
FILE NO.:	115,322.5
REV. NO.:	

CNN	ASSET TYPE	ADDRESS RANGE	DISTRICT	ON STREET	FROM STREET	TO STREET
12047000	SEGMENT	300 - 399	6	SPEAR ST	FOLSOM ST	HARRISON ST
2868000	SEGMENT	500 - 599	6	BEALE ST	BRYANT ST \ DELANCEY ST	END
50000000	INTERSECTION		6	BEALE ST	END	
7520003	SEGMENT	300 - 339	6	JESSIE ST	04TH ST	JESSIE EAST ST
35046000	INTERSECTION		6	JESSIE ST	JESSIE EAST ST	
7520004	SEGMENT	340 - 349	6	JESSIE ST	JESSIE EAST ST	END
4057000	SEGMENT	100 - 171	6	CLARA ST	04TH ST	HULBERT ALY
30008000	INTERSECTION		6	HULBERT ALY	CLARA ST	
4058000	SEGMENT	172 - 199	6	CLARA ST	HULBERT ALY	05TH ST
7696000	SEGMENT	1 - 49	6	JULIA ST	ANGELOS ALY \ MISSION ST	MINNA ST
8158000	SEGMENT	1 - 99	6	LASKIE ST	MISSION ST	END
50045000	INTERSECTION		6	LASKIE ST	END	
3261000	SEGMENT	1 - 99	6	BRUSH PL	HALLAM ST	END
50022000	INTERSECTION		6	BRUSH PL	END	
3939000	SEGMENT	1 - 99	6	CHESLEY ST	HARRISON ST	HOMER ST
24253000	INTERSECTION		6	HOMER ST	CHESLEY ST	
7018000	SEGMENT	1 - 99	6	HOMER ST	CHESLEY ST	END
50017000	INTERSECTION		6	HOMER ST	END	

NO.	DATE	DESCRIPTION	BY	APP.
TABLE OF REVISIONS				

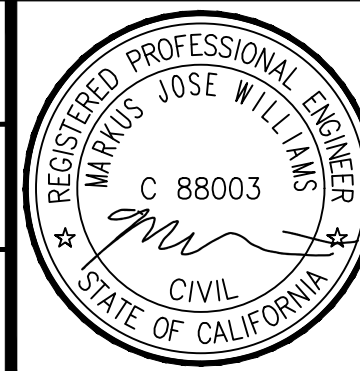
REFERENCE INFORMATION
& FILE NO. OF SURVEYS



BUREAU OF ENGINEERING
CITY & COUNTY OF SAN FRANCISCO
SAN FRANCISCO PUBLIC WORKS
49 SOUTH VAN NESS AVENUE, 8TH FLOOR
SAN FRANCISCO, CA 94103

Acting Section Mgr:	DEANNA CALLEROS	Date:	12/13/2022
Deputy Bureau Mgr:	FERNANDO CISNEROS		12/13/2022
Acting Bureau Mgr:	IQBAL DHAPA		12/13/2022

DESIGNED:	M. WILLIAMS	DATE:	7/22
DRAWN:	C. HOLMAN	DATE:	7/22
CHECKED:	D. CHAN	DATE:	7/22



SCALE:	NONE
SHEET OF SHEETS	2 OF 16

AS-NEEDED PAVEMENT PRESERVATION CONTRACT 4B
(GENERAL AS-NEEDED CONTRACT G18)

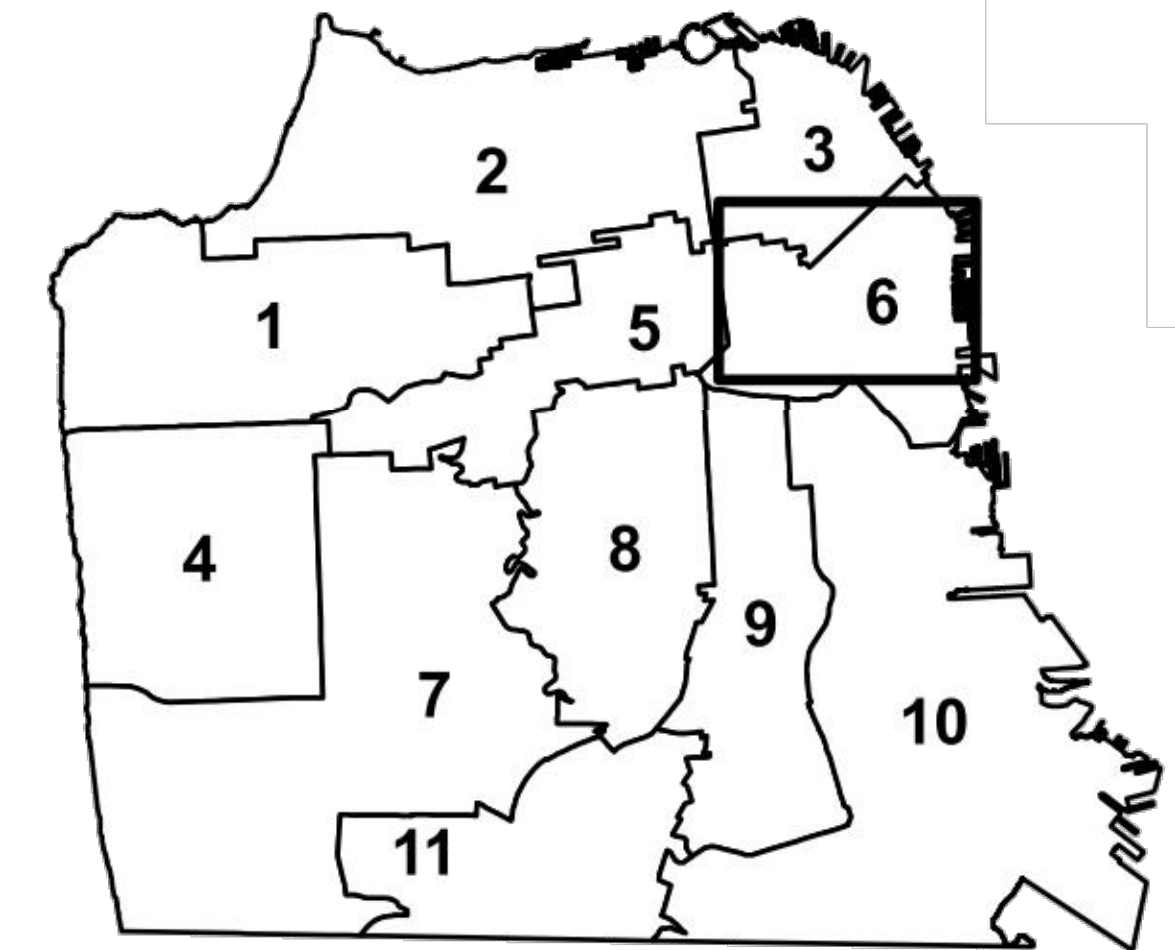
CONTRACT SERVICE ORDER 5
DISTRICT 6
LOCATIONS SHEET

CONTRACT ID.	1000016821
DRAWING NO.	R-22
FILE NO.	115,347
REV. NO.	



NOTE: SEE G-1 GENERAL NOTE #18C FOR TRAFFIC CALMING DEVICES. EXISTING SPEED HUMP, REFER TO T-3.

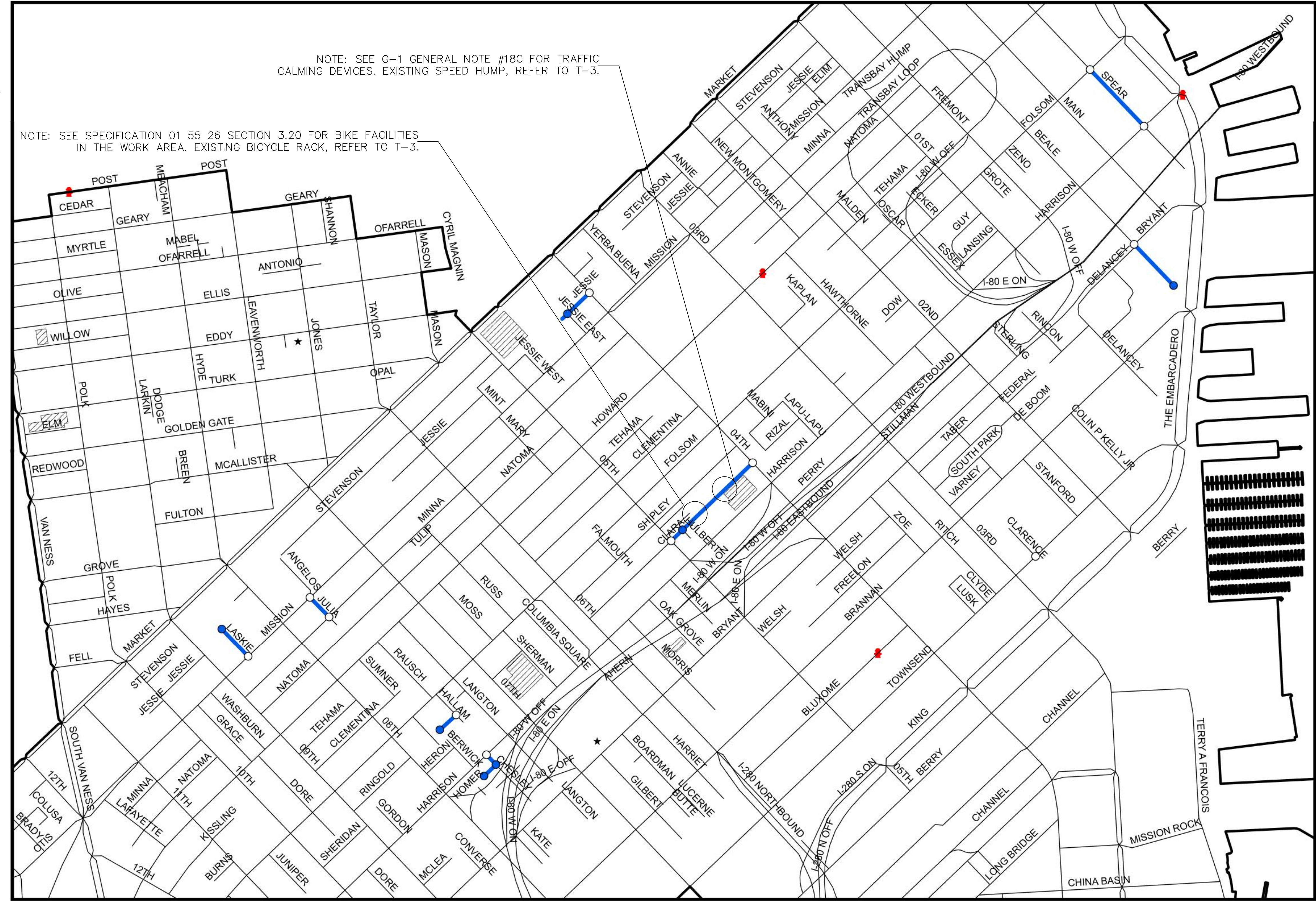
NOTE: SEE SPECIFICATION 01 55 26 SECTION 3.20 FOR BIKE FACILITIES IN THE WORK AREA. EXISTING BICYCLE RACK, REFER TO T-3.



LEGEND

- █ BLOCK - INCLUDED
- INTERSECTION - INCLUDED
- INTERSECTION - EXCLUDED
- SCHOOL
- HOSPITAL
- ★ POLICE STATION
- FIRE STATION

FOR WORK ADJACENT TO SCHOOL, FIRE STATION, POLICE STATION, HOSPITAL, AND PARKING GARAGES, REFER TO TRAFFIC SPEC - SECTION 01-55-26 FOR SPECIAL INSTRUCTIONS.



NO.	DATE	DESCRIPTION	BY	APP.
TABLE OF REVISIONS				

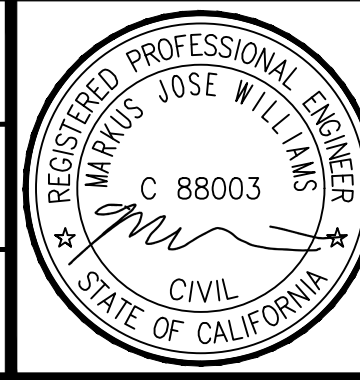
REFERENCE INFORMATION & FILE NO. OF SURVEYS



BUREAU OF ENGINEERING
CITY & COUNTY OF SAN FRANCISCO
SAN FRANCISCO PUBLIC WORKS
49 SOUTH VAN NESS AVENUE, 8TH FLOOR
SAN FRANCISCO, CA 94103

Date: 12/13/2022
Acting Section Mgr: DEANNA CALLEROS
Deputy Bureau Mgr: FERNANDO CISNEROS
Acting Bureau Mgr: IQBAL DHAPA

DESIGNED: DATE: M. WILLIAMS 7/22
DRAWN: DATE: C. HOLMAN 7/22
CHECKED: DATE: D. CHAN 7/22



SCALE: NONE
SHEET OF SHEETS: 3 OF 16

AS-NEEDED PAVEMENT PRESERVATION CONTRACT 4B
(GENERAL AS-NEEDED CONTRACT G18)
CONTRACT SERVICE ORDER 5
DISTRICT 6
PARTIAL MAP 1 OF 1

CONTRACT ID: 100016821
DRAWING NO: R-23
FILE NO: 115,348
REV. NO:

CNN	ASSET TYPE	ADDRESS RANGE	DISTRICT	ON STREET	FROM STREET	TO STREET
986000	SEGMENT	4200 - 4299	8	19TH ST	COLLINGWOOD ST	DIAMOND ST
987000	SEGMENT	4300 - 4399	8	19TH ST	DIAMOND ST	EUREKA ST
988000	SEGMENT	4400 - 4499	8	19TH ST	EUREKA ST	DOUGLASS ST
1121000	SEGMENT	3700 - 3778	8	21ST ST	SANCHEZ ST	RAYBURN ST
1122000	SEGMENT	3769 - 3799	8	21ST ST	RAYBURN ST	NOE ST
1123000	SEGMENT	3800 - 3899	8	21ST ST	NOE ST	CASTRO ST
1268000	SEGMENT	3500 - 3599	8	23RD ST	SAN JOSE AVE	GUERRERO ST
1631000	SEGMENT	200 - 299	8	29TH ST	DOLORES ST	CHURCH ST
1632000	SEGMENT	300 - 399	8	29TH ST	CHURCH ST	SANCHEZ ST
1633000	SEGMENT	400 - 499	8	29TH ST	SANCHEZ ST	NOE ST
2861000	SEGMENT	160 - 199	8	BEACON ST	MIGUEL ST	HARRY ST
33370000	INTERSECTION		8	HARRY ST	BEACON ST	
2862000	SEGMENT	200 - 499	8	BEACON ST	HARRY ST	DIAMOND ST
21832000	INTERSECTION		8	HIGHLAND AVE	ARLINGTON ST	
2450000	SEGMENT	221 - 299	8	ARLINGTON ST	HIGHLAND AVE	MIGUEL ST
21855000	INTERSECTION		8	MIGUEL ST	ARLINGTON ST	
2451000	SEGMENT	300 - 399	8	ARLINGTON ST	MIGUEL ST	MATEO ST
21856000	INTERSECTION		8	MATEO ST	ARLINGTON ST	

NO.	DATE	DESCRIPTION	BY	APP.
TABLE OF REVISIONS				

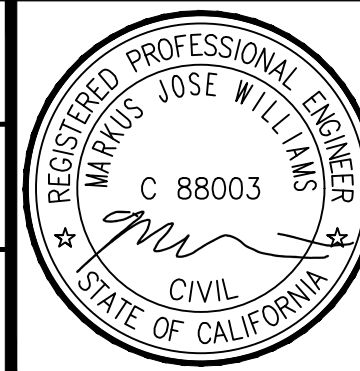
REFERENCE INFORMATION
& FILE NO. OF SURVEYS



BUREAU OF ENGINEERING
CITY & COUNTY OF SAN FRANCISCO
SAN FRANCISCO PUBLIC WORKS
49 SOUTH VAN NESS AVENUE, 8TH FLOOR
SAN FRANCISCO, CA 94103

Acting Section Mgr:	DEANNA CALLEROS	Date:	12/13/2022
Deputy Bureau Mgr:	FERNANDO CISNEROS		12/13/2022
Acting Bureau Mgr:	IQBAL DHAPA		12/13/2022

DESIGNED:	M. WILLIAMS	DATE:	7/22
DRAWN:	C. HOLMAN	DATE:	7/22
CHECKED:	D. CHAN	DATE:	7/22



SCALE:	NONE
SHEET OF SHEETS	4 OF 16

AS-NEEDED PAVEMENT PRESERVATION CONTRACT 4B
(GENERAL AS-NEEDED CONTRACT G18)

CONTRACT SERVICE ORDER 5
DISTRICT 8
LIST OF LOCATIONS

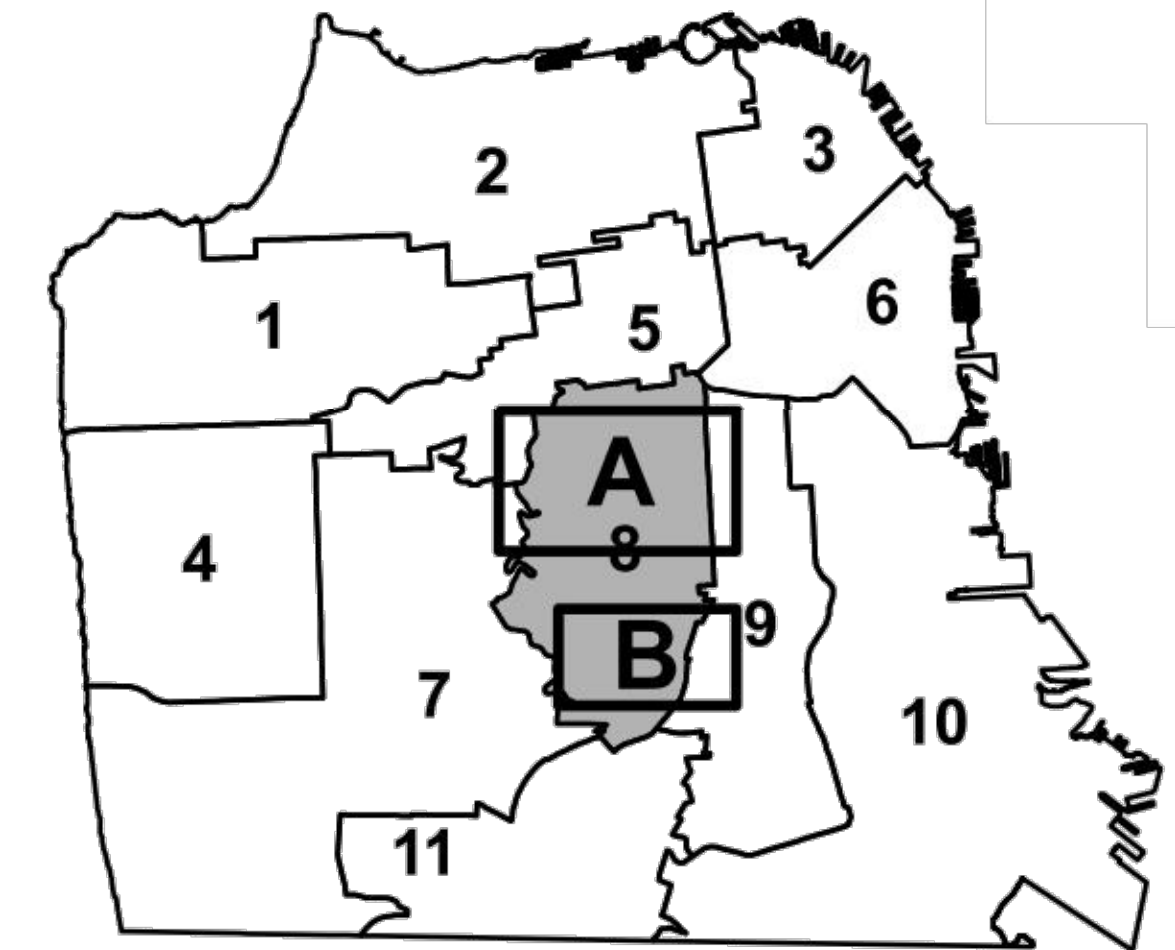
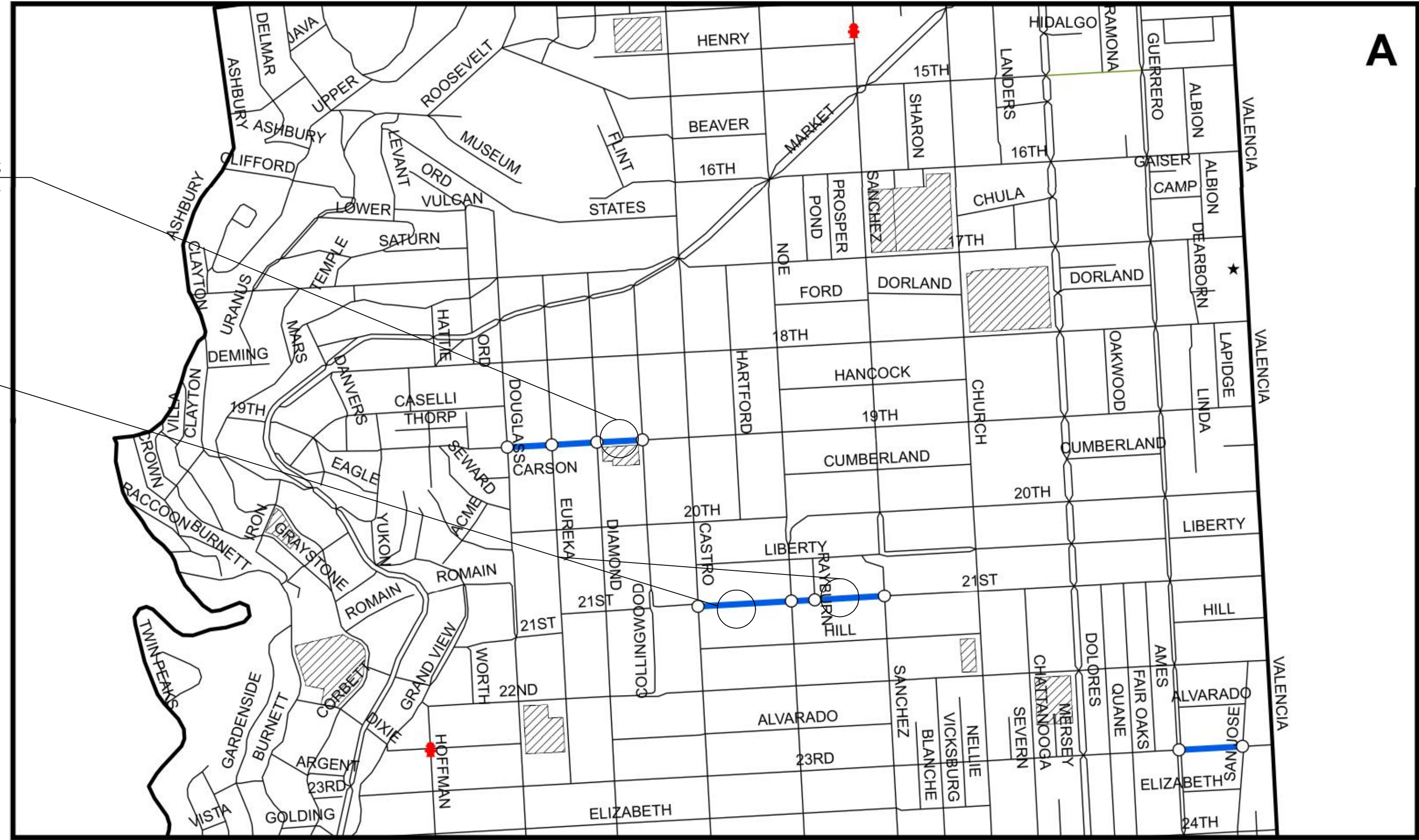
CONTRACT ID.	1000016821
DRAWING NO.	R-24
FILE NO.	115,349
REV. NO.	



NOTE: SEE SPECIFICATION 01 55 26 SECTION 3.20 FOR BIKE FACILITIES IN THE WORK AREA. EXISTING BICYCLE STATION, REFER TO T-7.

NOTE: SEE G-1 GENERAL NOTE #18C FOR TRAFFIC CALMING DEVICES. EXISTING SPEED HUMP, REFER TO T-8.

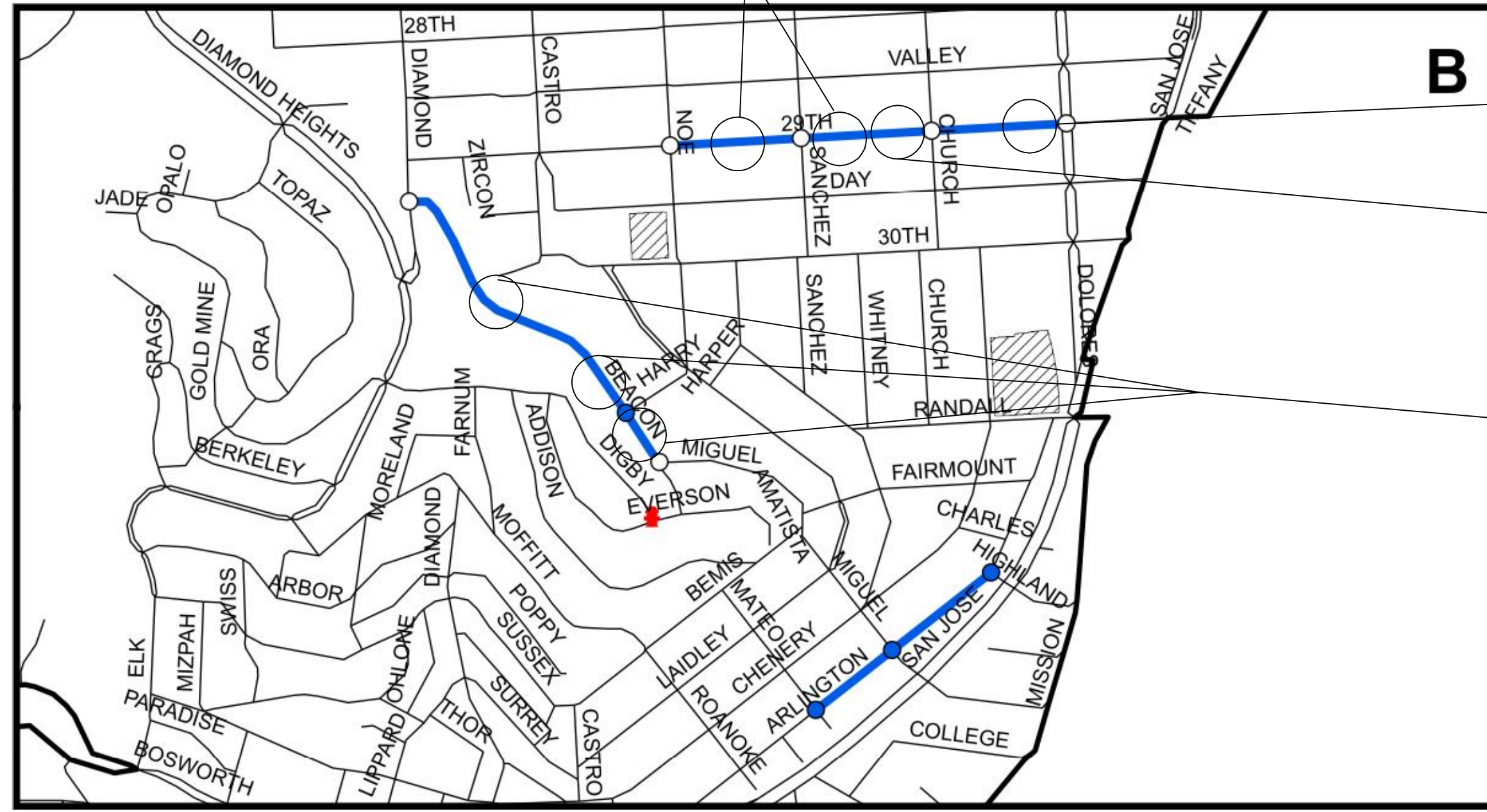
NOTE: SEE G-1 GENERAL NOTE #18C FOR TRAFFIC CALMING DEVICES. EXISTING SPEED HUMP, REFER TO T-9.



LEGEND

- BLOCK - INCLUDED
- INTERSECTION - INCLUDED
- INTERSECTION - EXCLUDED
- SCHOOL
- HOSPITAL
- ★ POLICE STATION
- FIRE STATION

FOR WORK ADJACENT TO SCHOOL, FIRE STATION, POLICE STATION, HOSPITAL, AND PARKING GARAGES, REFER TO TRAFFIC SPEC - SECTION 01-55-26 FOR SPECIAL INSTRUCTIONS.



NOTE: SEE T-9 GENERAL NOTE #4 FOR SHARED SPACES AND PARKLETS. EXISTING PARKLET, REFER TO T-9.

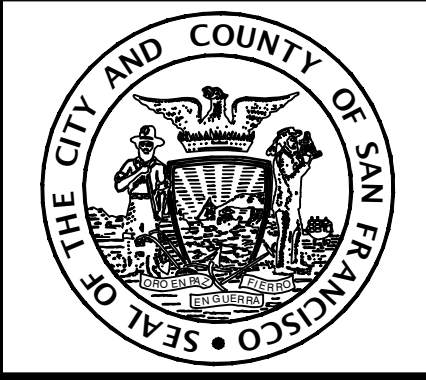
NOTE: SEE SPECIFICATION 01 55 26 SECTION 3.20 FOR BIKE FACILITIES IN THE WORK AREA. EXISTING BICYCLE STATION, REFER TO T-9.

NOTE: SEE G-1 GENERAL NOTE #18C FOR TRAFFIC CALMING DEVICES. EXISTING SPEED HUMP, REFER TO T-10.



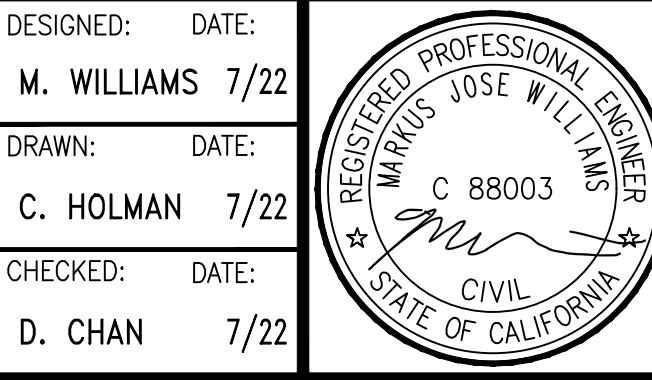
NO.	DATE	DESCRIPTION	BY	APP.
TABLE OF REVISIONS				

REFERENCE INFORMATION & FILE NO. OF SURVEYS



BUREAU OF ENGINEERING
CITY & COUNTY OF SAN FRANCISCO
SAN FRANCISCO PUBLIC WORKS
49 SOUTH VAN NESS AVENUE, 8TH FLOOR
SAN FRANCISCO, CA 94103

Acting Section Mgr:	DEANNA CALLEROS	Date:	12/13/2022
Deputy Bureau Mgr:	FERNANDO CISNEROS	DESIGNED:	M. WILLIAMS 7/22
Acting Bureau Mgr:	IQBAL DHAPA	DRAWN:	C. HOLMAN 7/22
		CHECKED:	D. CHAN 7/22



SCALE: NONE
SHEET OF SHEETS: 5 OF 16

AS-NEEDED PAVEMENT PRESERVATION CONTRACT 4B
(GENERAL AS-NEEDED CONTRACT G18)
CONTRACT SERVICE ORDER 5
DISTRICT 8
PARTIAL MAP 1 OF 1

CONTRACT ID:	1000016821
DRAWING NO.:	R-25
FILE NO.:	115,350
REV. NO.:	